

Devils



1997/98

Annual Magazine

LIFE MEMBERS

Elaine Robinson

Sandra Ford

Isabel Tenger (Dcd Sept '95)

Bill Tegner (Dcd Oct '82)

Shirley Pollock

Robyn Gaddes

Robyn Gillinder

Dot Pullen

Fay Fraser

Kaye Smith

Chris Morris

Vicki Gannon

Debbie Devine

DEVILS COMMITTEE 1997/98

MANAGEMENT COMMITTEE

PRESIDENT John Kennedy

VICE PRESIDENT Chris Morris

SECRETARY Timna Kerr

TREASURER Jan Trudgian

COMMITTEE MEMBERS

Asst SECRETARY Chris Kennedy

Asst TREASURER Chris Kennedy

EQUIPMENT Timna Kerr

CANTEEN Chris Kennedy

GENERAL/P.R. Marie Morgan

GENERAL Julie Wahry

GENERAL Dot Pullen

GENERAL Jo Willimott

COACHES 1997/1998

COACH	ASS. COACH	TEAM
Gavin Topping	Maree Morgan	T-ball
Susi Gauci	Angie Miers	Under 12
Kerri-Anne Carland	Jodie Lavell	Under 14
Timna Kerr	Alissa Kennedy	Under 14
Susi Gauci	Steve Miles	Under 16
John Kennedy		Div 5
Chris Morris		Div 2
Kevin Fainges	Kerri-Anne Carland	Div 1

SCORERS

Dot Pullen	Chris Kennedy	Jan Trudgian
Cathy O'Brien	Chris Morris	Debra-Lee Cooper
Timna Kerr	Rachelle Kennedy	Susi Gauci

Thank you to all the coaches
assistant coaches and scorers
for the dedication and
support throughout the season
We hope to see you next
season for more fun and
excitement.

PRESIDENT'S REPORT

I did not think that I would be writing a President's report again, having done 'my bit' in the 96/97 season, but it seems that there were people in the Club who thought I should suffer for another season!

Anyway, I must admit that I enjoyed this season more than last year. We had the luxury of being in a better financial position than when I served my first term, and I had more 'workers' than last season. Sadly though, it was the same people time and again putting in the hard work.

This season I had some different goals in mind than last year. We had juniors in all the age groups, our financial situation was sound, and the new equipment was obtained. However, I had the opportunity to go through some of the older Club magazines. Not long ago, prior to the move to Banyo, this Club was one of the biggest in the BSA competition.

I decided to try and revive the Club's ailing fortunes in attracting and retaining players. The primary means for achieving this was to increase the size of the Club. Realistically we were never going to be able to do that whilst we stayed at Banyo. There is just not the player base there for the growth we require. This season, my family and I dropped six thousand leaflets in letterboxes and shops in the immediate area. From this we obtained less than a dozen players.

The alternative was to move to an area where we could possibly attract many more members. Further, I believed that in the short term we should try and amalgamate with another Club. The rest, as most members know after the Special General Meeting, is history.

We have been accepted as a primary founding Club with the Shaw Sportz association managed by the Kedron Wavell Services Club at Shaw Park, Woolloowin. And whilst negotiations are still taking place with the Western Wildcats Softball Club, it seems they will merge with this Club as of the AGM on 1st May 1998.

Just as a matter of interest, I have had many telephone calls from other clubs and coaches wanting to become part of this Club next season!

Although being at Shaw Park will mean that our loyal Banyo people would have further to travel to training, I am sure they will stay with us, as the long term benefits of being in Shaw Sportz will be enormous. Not just for the Club, but for the individual members as well.

Further, it will place us in an area that is predominantly family orientated, and we should find it easier to fill our junior teams, and therefore in time our seniors. But these advances will take time, and a lot of hard work. I call on all of you to help the Club in the following few seasons. All it really takes is for many people to give up a few hours a year, that way the few don't have to do all the work. We are all members of the Club, not just the committee or the players. Unfortunately, I cannot abide the parent who tells me, "I don't do canteen duty. Sorry." But is quite happy to have the Club as a baby-sitting service for a few hours a week.

I am sorry to go on about this, but it is going to be an important issue over the next few years. As we get settled in Shaw Sportz, we will have the opportunity to work the canteen there on designated days. All profit will be returned to the Club. However, I do not want to see it degenerate to the same few people there every time like it has with the Club's BSA duties. I am considering a roster system for each team, and the members within that team. But I hope it does not have to come to that yet.

On a lighter note, we did obtain a State Government grant for Coach's training and we had many members obtain their Level 0 or Level 1 Coaching Certificates.

Further, I have applied for a Brisbane City Council Grant for the erection of back-nets at our permanent diamond at Shaw Park.

I am also applying through the Community Gaming Benefit Fund for addition equipment (mostly for Wildcats if and when they come over, we can sell their old gear and hopefully get a few dollars for it), first aid kits for every team, a new pitching machine (it is the most expensive item at \$2500: we will have use of seven batting nets at Shaw Park) and a photocopy machine for the Club. I will keep you all informed of how we go with these applications.

Although we did not fare too well on the playing field by getting into many finals, I think we have progressed in some other areas that will rectify that situation in a few years.

I should mention here that I think we should be especially proud of the junior teams and their coaches. Gavin Topping, Marie Morgan, Susie Gauci and Angie Miers have worked hard this season turning out some top little softballers. If this were any other season, the T-ballers would have received a medallion from Brisbane for being the top team in their grade! However the decision not to have points in T-ball and Under 12 was made last year. Anyway, we, and the teams they played know how good they are. Also, we should be proud of the efforts of Timna Kerr, Alissa Kennedy, Kerri-Anne Carland and Jodie Lavell with the Under 14 teams, Susie Gauci and Steve Miles with the Under 16's. We had many new players in these grades, and as some of the girls discovered, it is not easy to begin at this level. But, I have watched them all season and there has been good, steady improvement.

This season we fielded only three senior teams, and with lack of coaches and players it was a continual struggle every week just to have a team on the diamond. However, I think we should thank Kevin Fainges and Chris Morris for continuing with the battle. They did a great job, sometimes against short notice.

I hope all of these people will come back next season

I would like to thank the committee, Chris Morris, Timna Kerr, Jan Trudgian, Chris Kennedy, Dot Pullen, Julie Wahry, Jo Willimott and Marie Morgan for the time and assistance and support they have given this season.

I would also like to thank Deb Cooper, who started the season as our secretary, but due to work and personal reasons had to resign.

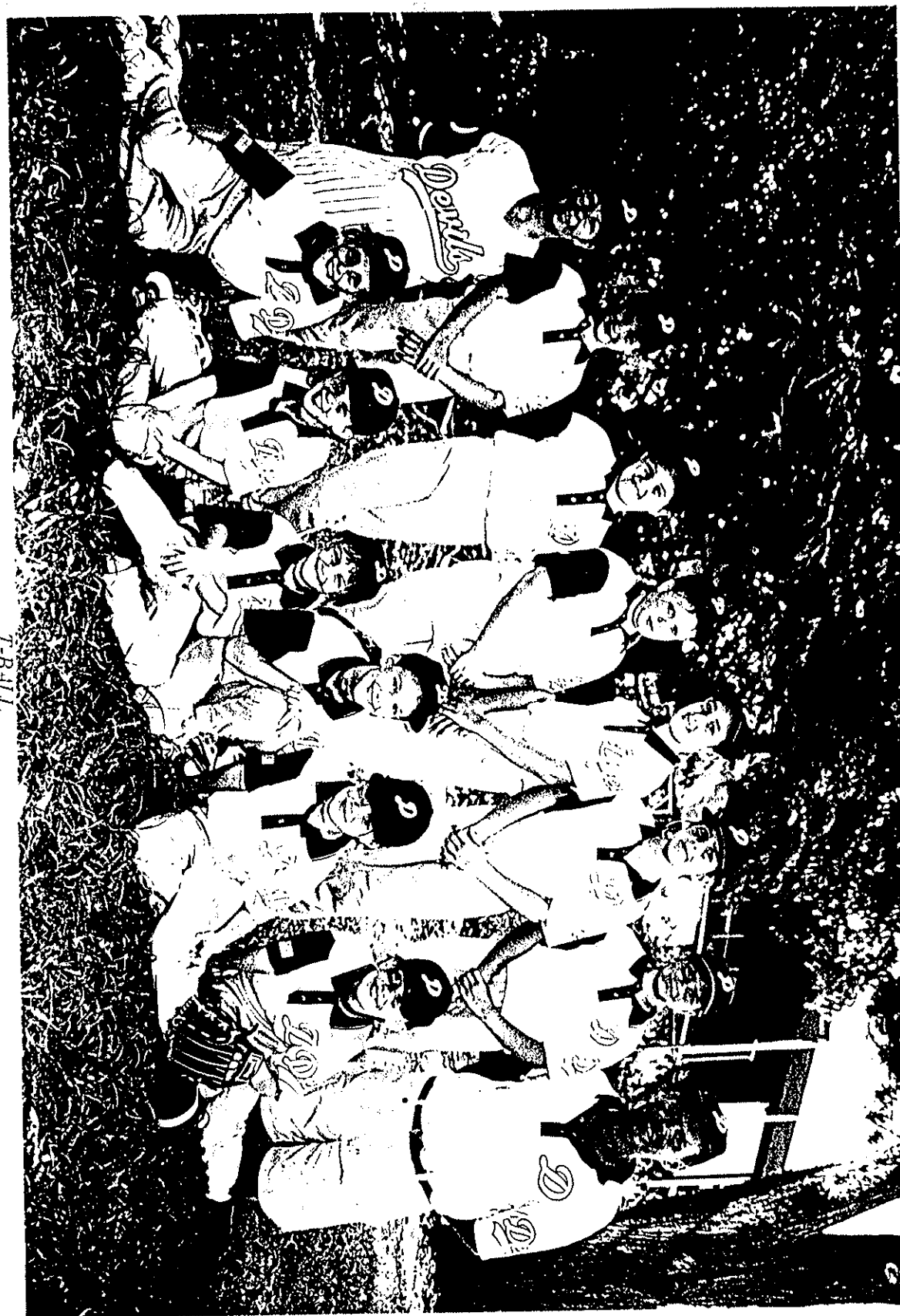
I wish to also thank all the scorers who helped out this season. You know who you are.

Finally, I would like to thank all of you players who make up this great Club, and the parents of the juniors who keep bringing them back here. We signed some great new players this year and I got to know some of the older ones a bit better. I think this season has been a turning point for us, and we will just have to see where it leads from here.

I hope to see you all again next season.

John Kennedy





Back row (l-r): Marie Morgan (Coach), Hayley Morgan, Jessica McNeag, Rebecca Sparks, Kristie Lahay, Jamie McNee, Suzie Lohrs, Gavin Topping (Coach).
Front row: Lara Gosney, Carly O'Brien, Amanda Trudgian, Allison Stewart-Salmon, Casey Topping, Sarah Trudgian.

(Photo - Sue & Wiles Fogzall)

T-BALL

COACH Gavin Topping
ASS COACH Marie Morgan
SCORER Jan Trudgian

Girls, on behalf of Marie and myself, thank you for a wonderful season with memories of games that we will treasure for years. It certainly looks like we will be the leaders in our division. The images that I will keep are the strong batting, the double plays, the good running from all of you and the determination shown to win a few games in the fourth innings. That shows you are a real team. For those girls going up next year, good luck. You will have no trouble adjusting to the game. For those girls remaining just keep the same attitude and Devils will have another fantastic year.

Special thanks must go to -

Debbie Sparks - manageress

Cathy O'Brien - ass. coach/scorer

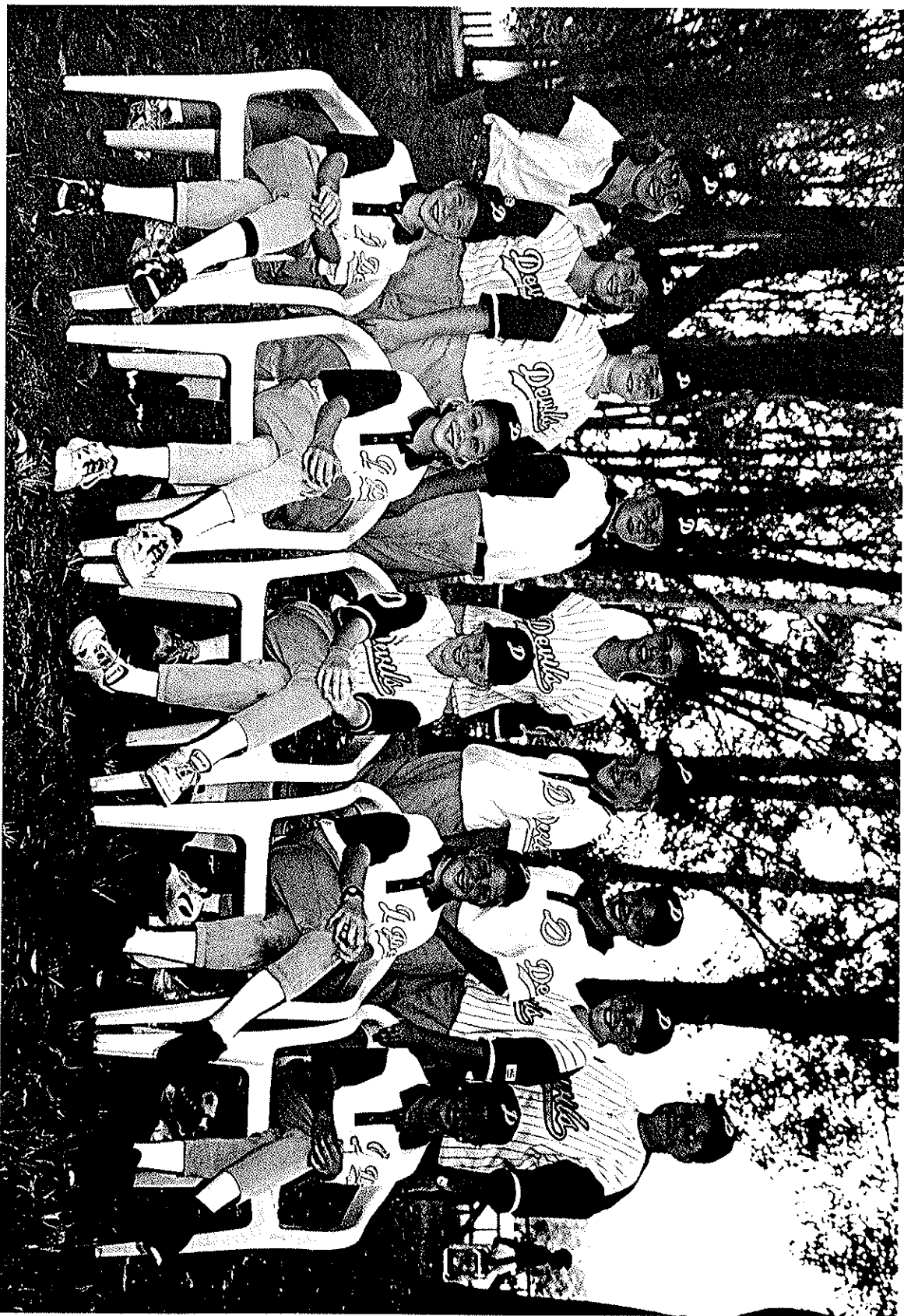
Jan Trudgian - scorer

Allan Trudgian - tent pitcher/batting order organiser

Lloyd Stewart-Salmon - Tent pitcher/batting order
organiser

Finally to Marie, thanks for all your assistance as it is of benefit to have two coaches for this age group. It was great that we were both there to mould the girls into a strong, winning team.

All the best, Gavin Topping



Back row (l-r): Angie Miers (Coach), Nicole Black, Anie Rolfe, Melissa Boyes, Erica Trudgian, Kate Lowrie, Rebecca Fernando, Megan Topping, Devils 7.

From row: Lara Scholz, Shannon Lowrie, Lesa Handford, Parice Lowrie, Kayleigh Willmott. Absent: Jan Trudgian (Scorer).
Susie Gauci (Coach).
(Photo ~ Sue & Wiles Fajzullin)

UNDER 12B

COACH Susie Gauci
ASS COACH Angie Miers
SCORER Jan Trudgian

First of all thank you to Angie who has been fantastic to myself and the girls. Also the parents who's support has been appreciated and to the manageress - Melinda Handford and our scorer - Jan Trudgian.

I have enjoyed this season with the girls and over the weeks I was often speechless as I saw them developing skills which will hopefully take them to a representative team. I wish you all the best in the of season and hope to see next season. Stay ssafe and thanks to all involved.

Susie Gauci

UNDER 14C

COACH Kerri-Anne Carland
ASS COACH Jodie Lavell
SCORER Dot Pullen

Well, what a season!!!!

On behalf of Jodie and myself, I would like to thank the team, a great bunch of girls, for a successful season. In our first year of coaching and with a new team, our goal was to win one game. We did that before Christmas and finished the season with a 13 all draw with the other Under 14 team. What a great match.

Many thanks to many people who assisted the team throughout the season. Special thanks must go to Jo Willimott, our manageress, what a great asset you are to the team and the club. Our scorer Dot, thanks. Also a big thank you to the Under 12 players who filled in every week so we could take the diamond. Thanks to all the parents and supporters who turned out every week in support.

Although the team didn't make the finals, I think we had a great learning year and hopefully next year will bring more success.

Last but not least, thanks to the team. You made coaching an enjoyable experience and I hope to see you all again next season.

Kerri-Anne and Jodie

TEAM TROPHIES

MOST VALUABLE PLAYER Kristle Kiss

MOST IMPROVED Lucinda Perren

BEST ALL-ROUNDER Cleo Daly



Back row (l-r): Krystle Kiss, Kirsty Willimott, Kerri Anne Carland (Coach), Bridget Roberts, Felicity Templeman.
Front row: Christina Atkinson, Lucy Perren, Jodie Lavell (Ass. Coach), Kylie Scully, Cleo Daly.

DEVILS 6 U/14

UNDER 14C

COACH Timna Kerr
ASS. COACH Alissa Kennedy
SCORER Debra-Lee Cooper

I think HEART FAILURE best describes the 97/98 season!! I'm sure the parents and supporters would agree.

This was the second season for all the girls in this grade. They showed the parents, supporters and I that they could make it to the finals and that's just what they did.

These nine young ladies showed me that coaching is not just about teaching skills and attitudes, but it's also friendship. They made me laugh with their antics, angry with their silly errors, but best of all they made me cry on semi-final day by playing the best game they've ever played even though we came 'second'.

Thanks to Debra-Lee, our scorer. Deb kept score, cooled me down when I was angry and came to our break-up to help me tame nine teenage girls.

Thanks to Anne Rafter, our manageress. Everything was so organised!

A huge thanks to Alissa (the ASS) who was always there to catch the odd ball.

Finally, thanks to my wonderful, mad girls!

I hope to see you all back next season for Under 16's.

Timna

TEAM TROPHIES

MOST IMPROVED Liz Crossan

BEST ALL-ROUNDER Hayley Lavell

TEAM PLAYER Jasmine Donas

'CREEK' AWARD Rachelle Kennedy

Back row (l-r): Elizabeth Crossan, Hayley Lavell, Rachelle Kennedy, Stephanie Templeman, Lauren Gordon, Lisa Cruse.
Front row: Timna Kerr (Coach), Jillian Flesser, Vanessa Hood, Jasmine Donas, Alissa Kennedy (Ass. Coach).

U/14 C





Back row (l-r): Susie Gauci (Coach), Mandy O'Donnell, Amy Scales, Nicole Quigley, Lee-Anne Cahill, Melissa Tobler, Liz Allen (Mgr.), Steve Miles (Asst. Coach).
Front row: Alissa Kennedy, Rhianon Hodges, Lisa Allen, Rebecca Miles.
U/16
(Photo: Sue & Misses Taggart)

UNDER 16

COACH Susie Gauci
ASS COACH Steve Miles
SCORER Chris Kennedy

What a season!!!!!!!!!!

I started the season with brown hair and I finished with some grey hairs!!!! On a serious note it has been a challenging season. We had our ups and downs but when it comes to softball the Under 16 team has talent.

I must thank the parents of the Under 16s who came every Saturday and supported us. Thanks to the manageress - Liz Allen and scorer - Chris Kennedy. Thank you also to my co-coach Steve Miles who helped out at every training and games and to the girls - hope to see you all next season. Stay safe and thanks to everyone involved.

Susie Gauci

TEAM TROPHIES

BEST AND FAIREST	Rebecca Miles
MOST IMPROVED	Mandy O'Donnell
MOST HYPERACTIVE PLAYER	Melissa Tobler

DIVISION FIVE

COACH John Kennedy
SCORER Chris Kennedy
 Susi Gauci

This has been my first full season as a coach, and I must admit it has been an enjoyable experience.

I don't think the Div 5 ladies would agree with me on that! We did not win many games, although towards the end they managed to knock over the two top sides in our competition, but they did show improvement and most weeks had some fun. We were unfortunate in that we were regularly without some member of the team and then had to find replacements. This I think had an unsettling effect, as everyone had to move around a bit, but everyone tried hard at what they were given and got on with the job.

Thanks for the season ladies, for the patience with me (most of you are aware I am not yet an experienced coach), for the fun at the games and just for being there to play.

Thanks to Chris Kennedy and Susi Gauci for scoring my games and especially to the team manager, Julie Wahry, who really took a load off me by keeping the books and organising the umpiring. Also I would like to thank Chris Morris for assisting me whenever possible and taking the team whenever I had to work.

John Kennedy

TEAM TROPHIES

Best All-Rounder Robyn Blackmore
Most Improved Margaret Wood
Most Consistent Carolyn Jones

Back row (l-r): John Kennedy (Coach), Marie Pickering, Carolyn Jones, Julie Wahry, Doreen Chin, Robyn Blackmore.
From row: Ivonne Whitehead, Margaret Wood, Wendy Gauci, Cathy O'Brien, Lisa Hedges.

DIV 5



DIVISION TWO

COACH Chris Morris
SCORER Dot Pullen

Well, another season is over. It was not as successful as we would have liked but I think the ladies still enjoyed themselves and learnt a thing or two.

I would like thank them for their time and effort and for putting up with me!!!!!!

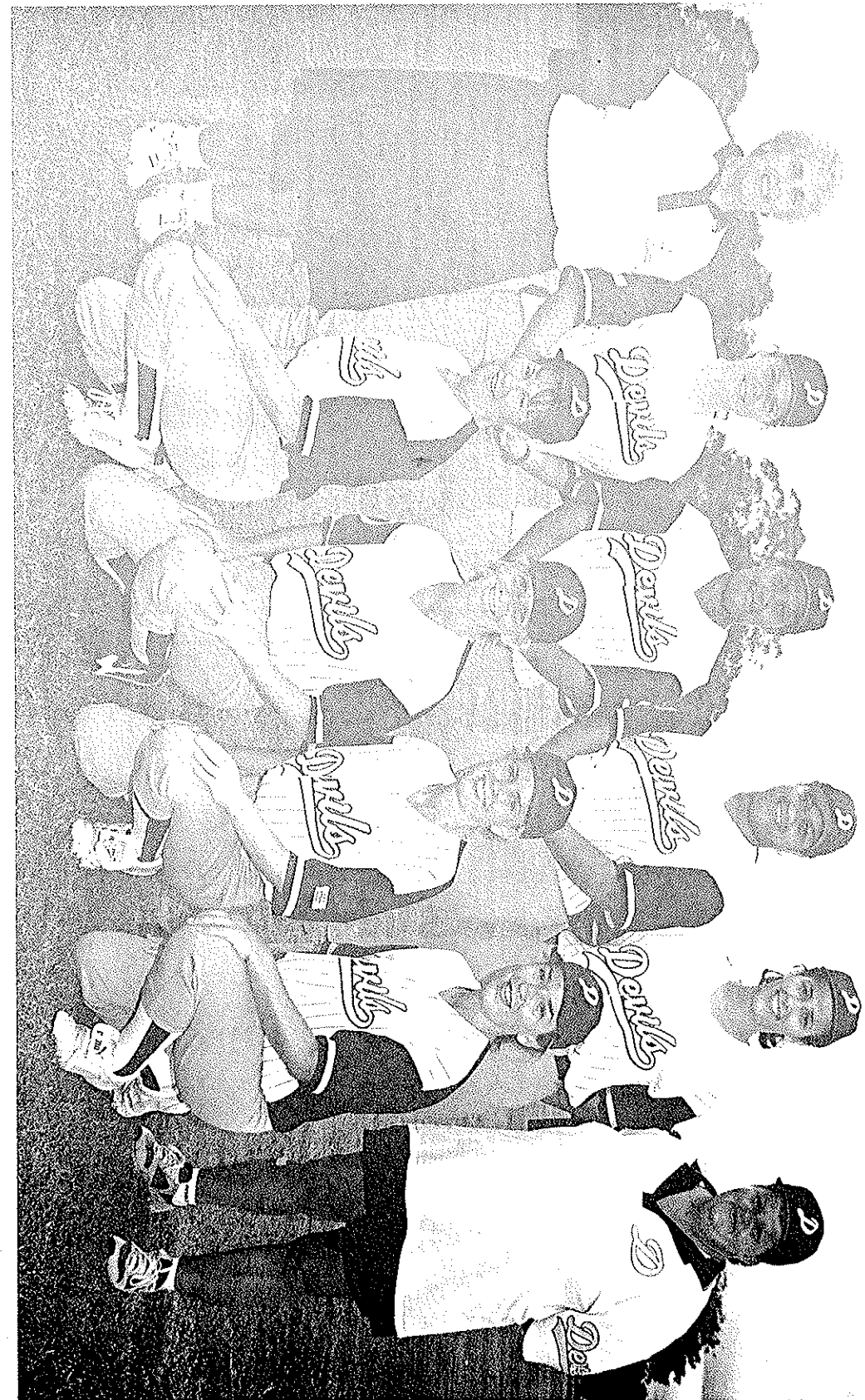
On behalf of myself and the team I would like to thank Dot for scoring this season and John for helping me out whenever I needed the help. Last but by no means least I would like to thank the Div 5 team who on many occasions saved our butts. I won't name them all but they know who they are. THANKS DIV 5

I hope to see everybody for the 1998/99 season and once again thanks to everyone.

Chris Morris

TEAM TROPHIES

<u>MOST IMPROVED</u>	Julie Munro
<u>"F" IT AWARD</u>	Marie Morgan
<u>BEST ALL-ROUNDER</u>	Michele Drabble
<u>COACH'S CHOICE</u>	Freda Hegarty



Back row (l-r): Dot Pullen (Scorer), Sharon Austen, Freda Hegarty, Leanne Dorman, Katrina House, Chris Morris (Coach).
Front row: Marie Morgan, Michele Drabble, Julie Munro, Marnie Munro.
(Photo - Sue & Ives Fitzgerald)

DIV. 2

DIVISION ONE

COACH Kevin Fainges

SCORER Dot Pullen

Firstly, I would like thank the Club for giving me the opportunity to coach, but what a team I got!!!!

We started off a bit rocky me getting to know them and the girls each other but in the end it came together winning five games in a row.

I do hope the girls stay together for next season and I get the chance to coach them again.

GUESS WHY! Heaps of running - you will fir to take out Division 1!!!!

Kevin Fainges



Back row (l-r): Debra Cooper, Sherri Parion, Jodie Lovell, Timna Kern, Kevin Fainges (Coach),
From row: Jillian Carter, Angela Miers, Belinda Marnett, Zoe Ann Nall.
Photo: Sue & Mike Pugh

DIV. 1

PERPETUAL TROPHIES

JUNIOR CLUB GIRL

Jasmine Donas

SENIOR CLUB GIRL

Timna Kerr

PLAYER OF THE FUTURE

Hayley Lavell

PLAYER OF THE SEASON

Michele Drabble

CLUB PERSON OF THE YEAR

Chris Morris

Chris Kennedy

PRESIDENT'S CUP AWARD

Susi Gauci

CLUB BATTING TROPHY

Jillian Carter

JUNIOR TEAM OF THE YEAR

T-Ball

SENIOR TEAM OF THE YEAR

Division 1

Congratulations to all those
receiving trophies. We hope to
see you all back next season
for more fun and games.

JUNIOR CLUB GIRL

JASMINE DONAS UNDER 14

Jasmine has been with the Club
a few years now. She brought
to the Club a strong personality
and a lot of skills. This season
she has used both to hers and
the Club's advantage.
Jasmine played as many games
as she could for higher grades
and then complained when she'd
played her quota. She put her
all into training and games often
pulling the girls out of a rutt.

She is a credit to the club
through her support for other
teams and she wears our uniform
with pride.

Congratulations Jazz!
See you next season.

SENIOR CLUB GIRL

Timna Kerr Division One

Every season there are some strong contenders for this trophy, and this year was no exception. There were some strong nominations, but when everything was taken into consideration Timna was still far ahead of everyone else. After her hectic schedule with the Club last season, Timna has come back again for more of the same.

A competitive player in the Division One side, coach of the Under 14 (5) side, Club Secretary, Equipment Officer, Scorer and shared the umpiring and canteen organising with Chris Kennedy. Besides that she took on the Coaching Director role, and undertook a Level One Coaching Certificate to hone her skills. Further, she has helped immensely in the preparation of this booklet you are now reading!

Timna is a strong Club woman. She has been with Devils for many years now, and is always willing to get in and help the Club.

I would like to personally thank her for her assistance this season, as it has made my job that much easier.

She is definitely an asset to this Club!

Many thanks, and congratulations Timna!

PLAYER OF THE FUTURE

HAYLEY LAVELL UNDER 14

Hayley has been with the club for many years now, since coming over from T-Ball at Northstar.

During that time she has been a strong club player, steadily improving with every season. She has played up in higher grades at every opportunity, and has nominated for Brisbane Representative sides every year.

Hayley was part of a very strong team this season and she has continued to show improvement. The committee felt Hayley has much more potential yet to be realised.

Congratulations Hayley. Hope to see you again next season!

PLAYER OF THE SEASON

Michele Drabble Division Two

Like the Senior Club Girl Trophy, there are always strong contenders for this award. This year there were six good nominations, virtually two from each senior team!

There was much debate with the final ballot being taken with not much separating each nomination.

However, Michele received the majority of all votes cast.

Michele has been with Devils for some years now, and has always been a strong team player and a devote Club supporter.

Michele is always a highly competitive player no matter what team she is in, and this year was no exception. She is one of the 'veterans' of this club and is always helpful with advice to the newer or younger players. She is always playing as hard as she can, and usually urging the team on by example.

Michele also played as many games as she could for the Division 1 team and sat on the bench on other occasions. She is always a great advertisement for this Club, always being properly attired at the games, umpiring or at office duty.

Congratulations Michele!

CLUB PERSON OF THE YEAR

Chris Morris Chris Kennedy

There were basically only two nominations for this trophy, as the panel said there were only two people who stood out this season. The ballot was split evenly between the two, and it was suggested to award two trophies.

Chris Morris has been with Devils for many years since the merger with Goldwings. During this period she has always been ready to help the Club, being a former President, Vice-President, Club Captain on many occasions and coach.

This was no exception; Chris was coach of the Division 2 side, assistant coach of my Division 5 team and took the team on the weekends I had to work, Vice-President, Club Selector and this year she even did some scoring!

Whenever there was work to be done, canteen, office, clean-up day, umpiring, whatever, there was Chris.

She was also a keen spectator at many Club games, being one of the first at the park and one of the last to leave, offering support, advice and encouragement to players of all grades.

Much the same could be said of Chris Kennedy. At the end of last season she vowed she was going to take it easy after the many Club duties she had performed, but due to circumstances beyond her control, she was "conscripted" for another season.

Chris has been with the Club for five years and during that time she has been a team manager twice, Assistant Treasurer and team scorer.

Like Chris Morris, when there was work to be done for the Club, there was Christine. This season she performed the duties of: Assistant Treasurer, (later in the season Assistant Secretary), Uniform Officer, scorer, organised the umpiring and canteen roster and office duties with Timna, and on many nights ran the canteen at Banyo.

Further, after the problems we had with our former uniform supplier, Christine spent many days searching for a suitable replacement. She was also a familiar face at Club canteen and office duty. Chris also wrote to many businesses and companies seeking sponsorship or goods for raffles, and was instrumental in obtaining "Plaspak Qld" as a Club sponsor.

Many thanks ladies. We hope you will come back for another season!!

THE PRESIDENT'S CUP

SUSI GAUCI

This is Susi's first year with the Club, and as such many people may be surprised that she is the recipient of this trophy.

However, when you look at what she has done this season, she really has the 'runs on the board'.

Susi started the season as an Under 16 coach. Halfway through the season she was asked to take on the Under 12 team which she readily accepted. Both of these teams have benefited from Susi's guidance and coaching. Both of these teams have performed well, especially the Under 12 team who love having her as their coach.

As well as her coaching duties, every week Susi was called to score many games, both Junior and Senior. She has umpired games, and also filled in for her teams at the canteen.

On the last game of the season, when Division 5 was short, she took the diamond as a player!

She has been an energatic addition to the Club. The Under 12's and I both hope she will be back next season.

Thanks and well done Susi.

BATTING AWARD

Jillian Carter Division One

The batting award is picked purely on batting statistics , but preference is given to players batting in a higher or harder grade.

Next season it is proposed to give a junior and a senior batting award.

This season , when the statistics were compared , Jill was chosen as the winner , not merely on her impressive batting score , but also on the basis of the quality of pitchers she had faced.

Congratulations Jill , it is a top effort !

JUNIOR TEAM OF THE YEAR

T-BALL

I think this is the first time a T-ball side has won this award at this Club, but what a great little team it is!!!

Under the guidance of Gavin and Marie, they have become the top side in their competition, and from what I've seen they will be filling the senior ranks with some great players.

This team has improved steadily all season. The girls have fun playing every week, but at the same time, they play each game very competitively.

The team also took part in a T-ball Carnival. The competition was tough but they held their ground.

At the time of writing, the T-ball side has topped their competition.

Good work girls and we hope to see you all back next season.

DIVISION 1 Team

NAME	POS	FIELDING					BATTING										ON BASE									
		PO	A.	E	F	F.AV	IB	AB	H	1	2	3	4	B.AV	R	S	BB	RBI	SB	SO	OB	E	FC	OB.AV	ABR	SLG.A
1 ANGELA MIERS		12	17	3		906	40	36	11	9	1	-	1	305	9		4	5	1	1	18					
2 SHEOLA PRETTON		7	11	7		720	29	21	7	6	-	-	1	333	14		8	6	3		19					
3 DEBRA-LEE COOPER		58	4	5		925	42	36	10	9	1	-	-	277	6		7	7	1	6	19					
4 JILLIAN CARTER		29	11	6		869	40	38	13	7	2	4	-	342	16		2	10		2	20					
5 TIMMY KERR		22	20	8		840	30	27	10	6	4	-	-	370	7	1	3	6		1	16					
6 BELINDA MARNER		16	7	1		958	31	25	9	7	1	-	1	360	12		6	6	7	1	20					
7 JOE LAVELL		20	16	8		818	45	39	9	8	1	-	-	230	12		7	5	8	6	23					
8 JOE-ANN NEILL		5	2			1000	25	24	7	6	-	1	-	291	4		1	7		2	8					
9 PETER-MARIE CHURCH		8	6	3		823	21	18	8	4	3	1		444	8		3	4			11					
5 KERRI-ANNE CARLAND		2	2	4		500	7	7	4	4				571				1		1	3					
OTHERS		3	11	5		736	52	50	14	11	2	1		280	9		2	6	2	8	21					
TOTAL		182	107	50		852	382	321	102					317	97	1	43	63	22	28	178					
								</																		

DIVISION 2 Team

DIVISION 5 Team

[illegible]

Team.

UNDER 14C (5) Team

FIELDING										BATTING										ON BASE						
NAME	POS	PO	A	E	F	F.AV	IB	AB	H	1	2	3	4	B.AV	R	S	BB	RBI	SB	SO	OB	E	FC	OB.AV	ABR	SLG
3 ALISSA KENNEDY		6	2	3		727	26	23	7	5	1			304	6		3	10	5	2	14					
13 RHIANNON HOGES		7	5	6		666	28	27	7	7				259	9		1	9	5	1	17					
15 LISA ALLEN		6	1	1		875	38	22	4	3				181	18		16	3	11	5	26					
15 AMY SCALES		8	5	8		619	40	36	9	6	3			250	7		4	4	5		16					
13 LEE-ANNE CAHILL		14	15	9		763	31	25	7	4	2			280	13		6	6	8	3	19					
6 MELISSA TOBIER		37	7	7		862	42	36	14	10	3			388	15		6	18	8	2	26					
6 REBECCA MILES		49	5	12		818	40	29	12	8	3			413	25		11	9	17	1	32					
14 NICOLE QUIGLEY		1	2	1		750	27	21	7	5	1			333	5		6	1	3	7	14					
5 MANDY O'DONNELL		16	3	7		730	28	20	4	3				200	11		8	4	8	3	14					
19 OTHERS		19	7	2		928	41	34	7	5	2			205	11		7	2	8	4	17					
TOTAL		133	52	56		767	341	273	78	56	9	4		285	120		68	66	79	28	195					

UNDER 14C (6) Team

NAME		FIELDING										BATTING										ON BASE					
		POS	PO	A	E	F	F.AV	IB	AB	H	1	2	3	4	B.AV	R	S	BB	RBI	SB	SO	OB	E	FC	OB.AV	ABR	SLG.AV
2	Kirsty WILLMOTT		13	5	3		857	22	13	3	3				230	10		9	5	8	2	15					
2	KYUE SCULLY		2	4	3		666	21	18	7	6	1			388	9		3	2	8	4	13					
2	Cleo DALY		30	3	8		804	28	10	4	4				400	14		18	6	10	2	22					
3	Christina ATKINSON		15	5	8		714	26	20	7	6	1			350	7		6	8	4	1	16					
1	KRYSTIE KISS		13	9	7		758	25	18	8	7	1			444	12		7	2	6	2	15					
3	FELICITY TEMPLEMAN		11	5	7		695	26	16	5	5				312	12		10	5	12	1	19					
2	LUCINDA FERREN		5	5	5		666	18	13	4	2	1			307	6		5	7	1	2	10					
1	Bridget ROBERTS		4	4	2		800	24	17	5	5				294	11		7	9	5	2	16					
3	Tracey RYAN						0	5	4						0	1		1	1	1		2					
6	OTHERS		3	2	4		555	42	33	5	5				151	12		9	8	5	10	21					