

COBWEB REGATTA
Opening of the 2017-2018 Season

SAILING INSTRUCTIONS



Organising Authority:
Gosford Sailing Club
28 Masons Parade, Gosford NSW 2250
Telephone (02) 4325 7216
E-mail: info@gossail.com.au

Gosford Sailing Club invites all sailing fleets to participate in the Regatta

Event website:
www.gossail.com.au



COBWEB REGATTA

1 RULES

The regatta will be conducted under the following:

- 1.1 The GSC Fleet sailing instructions
- 1.2 These Additional Regatta Sailing Instructions
- 1.3 The Notice of Race, as amended by these Sailing Instructions
- 1.4 For the purpose of these rules, the Race Committee will consist of the Sailing Manager, Class Fleets delegates, Yacht Handicapper or their nominated deputy

2 ENTRIES and SIGN ON

- 2.1 All OTB & Etchells entries will be on the day by way of sign on sheets
- 2.2 All inshore series entrant yachts shall enter on the yacht fleets season entry form
- 2.3 Yachts intending to race shall sign on with the Race officer prior to the warning signal and communicate their intention to race sail number and number of persons on board

3 FEES

- 3.1 GSC Members - FREE
- 3.2 Visitors \$20.00 per Senior Classes and \$10.00 per Junior Classes

4 SCHEDULE OF EVENTS

Races are scheduled as follows.

Saturday 2nd September 2017

A pre-race briefing will take place at 1100 in the Boat Shed Bar for all fleets

Mixed Fleet	1240	Warning Signal
Laser Fleet	1245	Warning Signal
Etchells Fleet	1250	Warning Signal
Yacht Div.s1 & 2	1250	Warning Signal
Yacht Non-Spinnaker Div.	1305	Warning Signal
16' Skiffs & Sports boats	1305	Warning Signal
Sabot, Opti's & F11 Fleet	1325	Warning Signal

- 4.2 It is the intention of the Race Committee to conduct the races as shown above, but the Race Committee may alter the Schedule of Races as required
- 4.3 No warning signal will be made after 1600hrs on Saturday 2nd September 2017

5 START

- 5.1 OTB & Etchells Warning Flags will be GSC class flags
- 5.2 All Yacht division's Warning Flag will be Code Flag R
- 5.3 All fleets will start by using rule 26 with the class warning signal made 5 minutes before the class starting signal.
- 5.4 The warning signal for each succeeding class shall be made with or after the starting signal of the preceding class

6 RECALLS

- 6.1 Fleets involved in a General recall shall commence their Starting sequence after the last scheduled fleet has started racing. This Rule is cumulative for all subsequent fleets

7 START LINE

- 7.1 In front of the GSC – between the Flag Mast displaying a Blue Flag on the Race Committee Boat (“Elsie Ross”) and an Orange Cylindrical Buoy at the port end of the line
- 7.2 Junior Fleets Starting area will be in front of the GSC as indicated at the Junior briefing and will be the line between the Junior Committee boat (the Doc displaying a blue flag) and buoy displaying an orange flag at the port end of the line

8 FINISH LINE

- 8.1 Senior Fleets finishing line shall be between the Flag Masts displaying a blue Flag on the Race Committee Boat “Elsie Ross” and Orange Cylindrical Buoy Laid to the starboard end of the line
- 8.2. Junior Fleet finishing area as described at the junior briefing. A line between the Junior Committee displaying a blue flag (the Doc) and buoy displaying an orange flag at the port end of the line

9 COURSES

See course map Appendix A

- 9.1 Senior courses will utilise the Permanent Marks as used by the Yacht Division. Course number for the day will be displayed on numbered boards displaying a yellow letter on a black background on the cabin top of the Committee Boat

Course Number	Classes	Course Description
1	Yachts 1 &2 / Etchells/Sports Boats/Skiffs	Start – 3(s) – 4(s) – 1(s) – 3(s) – 5(s) – Finish
	Yachts Div. 3	Start – 9(p) – 1(s) – 3(s) - 4(s) – Finish
	Mixed & Laser Fleets	Start – 5(p) – 1(s) – 3(s) – 5(s) – Finish
2	Yachts 1 &2 / Etchells/Sports Boats/Skiffs	Start – 3(s) – 5(s) – 8(s) – 3(s) – 5(s) – Finish
	Yachts Div. 3	Start – 2(s) – 3(s) – 4(s) – 5(s) – 9(s) – Finish
	Mixed & Laser Fleets	Start – 3(s) – 4(s) – 8(s) – 3(s) – 4(s) – Finish
3	Yachts 1 &2 / Etchells/Sports Boats/Skiffs	Start – 3(p) – 1(p) – 5(p) - 4(p) – Finish
	Yachts Div. 3	Start – 4(p) – 3(p) - 6(s) – Finish
	Mixed & Laser Fleets	Start – 3(p) – 2(p) – 9(s) –4 (p) - Finish

9.2 Junior Fleets – Courses and Marks will be described at the pre-race briefing

11 PRIZES

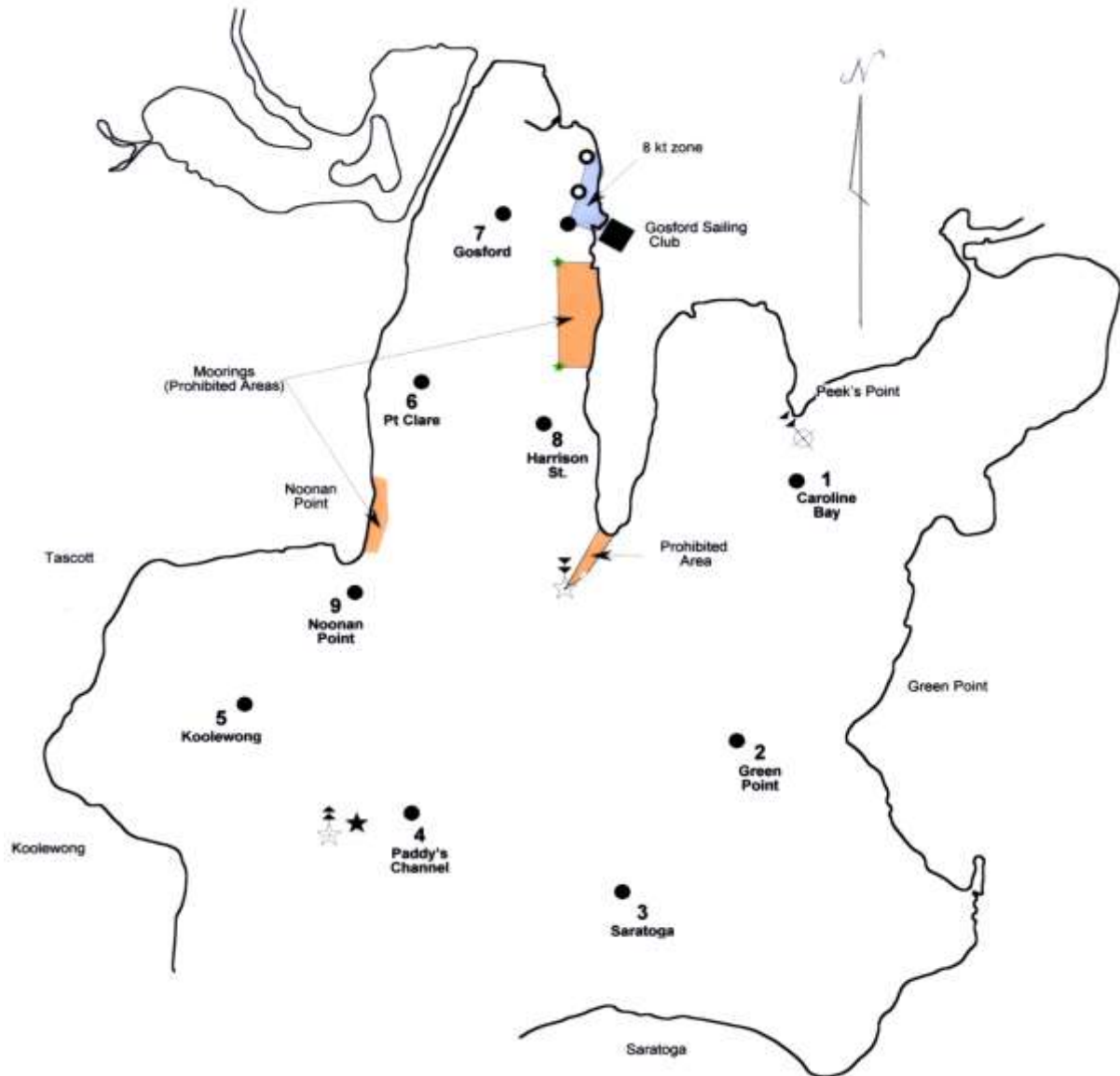
11.1 There will be a presentation of prizes at the Cobweb Regatta after the days racing and a sausage sizzle for all competitors

14 FURTHER INFORMATION

To enjoy the facilities GSC has to offer, see the club website www.gosfordsailingclub.com
 If you need berthing (free for the Regatta) for the night before or after the race please contact our Sailing Manager Peter Walsh on sailing@gossail.com.au , 4325 7216 or 0448257216

Appendix A MAP OF GSC PERMENANT MARKS.

These are Yellow Cones which may have the words "Rounding Mark" printed on them.



Locations are Approximate

Mark No.	South	East	Mark No.	South	East
1	33.26.890	151.21.073	5	33.27.587	151.19.445
2	33.27.564	151.20.896	6	33.26.560	151.19.919
3	33.27.949	151.20.483	7	33.26.160	151.20.193
4	33.27.781	151.19.908	8	33.26.727	151.20.331
			9	33.27.175	151.19.751