



2017 NT Championships Incorporating the 2017 NT Youth Championships

Sailing Instructions

1 Eligibility

- 1.1 All classes may be included upon demonstration to the Organising Authority they can achieve a minimum number of 5 boats.
- 1.2 For classes that do not meet 1.1 a combined fleet result scored under ASY will be available.

2 Entry Fee

	Price
Single Handed	\$20
Double Handed	\$30
Late Fee	\$50

3 Signals Made Ashore

- 3.1 Signals made ashore will be displayed at the flag mast which is located adjacent to the sailing tower.
- 3.2 Flag D with one sound means boats shall not leave the shore until the D flag is removed with one sound signal. The warning signal will be made no less than 30 minutes after flag D is displayed.

4 Schedule of Races

- 4.1 Competitor information sessions shall be held at 0900hrs on first day.
- 4.2 Late registration will take place in the Regatta Office from 0800hrs until 0900hrs first day.
- 4.3 The series will consist of a maximum of 8 races which are schedule as follows:

Races	Day and Date	Time of Warning Signal
Race 1	Friday 28/7/17	0955hrs
Race 2-3	Friday 28/7/17	Following
Race 4	Saturday 29/7/17	0955hrs
Race 5-6	Saturday 29/7/17	Following
Race 7	Sunday 30/7/17	0955hrs
Race 8	Sunday 30/7/17	Following

4.4 Note there are no provisions for resale.

4.5 No warning signal shall be made after 1500hrs on the last scheduled day of racing.

5 Retiring

Competitors retiring from a race shall, wherever possible, inform a Race Committee Vessel when leaving the course, and by personally notifying the Beach Marshall as soon as possible after arriving ashore as well as signing the Retirement column of the "Sign Off" form located at the Regatta Office.

5 Class Flag Description

Class	Class Insignia
Mixed	Numeral Pennant 5
A Class	A Class Flag
Tasar	Tasar Class Flag
Minnow	Minnow Class Flag

6 The Course

The diagrams in Attachment "A" shows the courses, including the approximate angles between legs, the order in which marks are to be passed and the side on which a mark is to be left. Courses will be displayed on the Race Committee vessel by way of course board.

7 Marks

Refer to attachment "A" Marks of Course.

8 The start

The starting sequence and class groupings for the first race will be displayed on the official notice board.

The starting sequence for subsequent races may be different from the first race. To alert boats that a race or sequence of races will begin soon, the orange starting line flag will be displayed with one sound at least five (5) minutes before a warning signal is displayed.

The starting line will be between a staff displaying an orange flag on the Race Committee vessel at the starboard end and the course side of the port end starting mark.

9 Change of Course

The change the next leg of the course, the race committee will lay a new mark (or move the finishing line) and remove the original mark as soon as practicable. When in a subsequent change a new mark is replaced, it will be replaced by an original mark.

10 The Finish

The finishing line will be between a staff displaying a blue flag on the Race Committee vessel and the course side of the finishing mark.

11 Prize Giving

A Presentation ceremony will be held as soon as possible after the last race.

12 Results

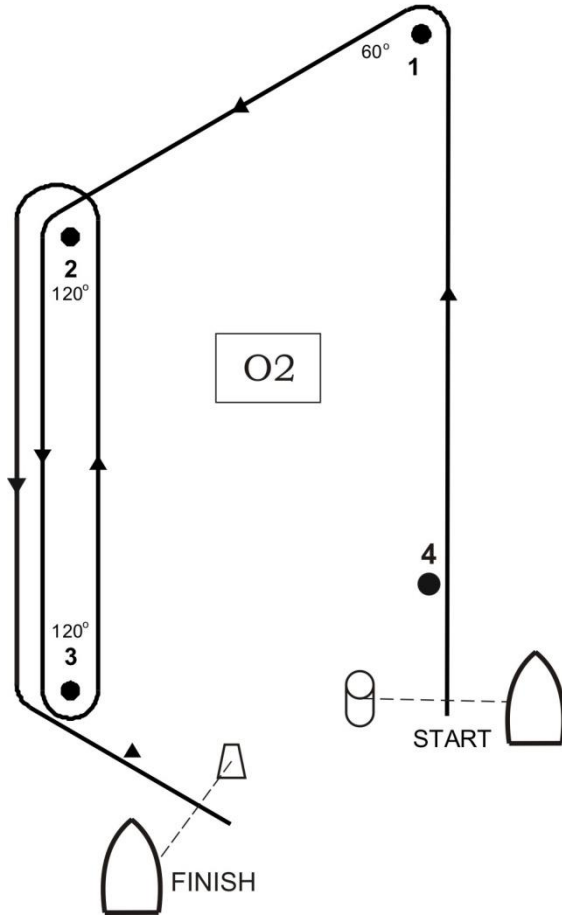
Results will be posted on the official notice board

ATTACHMENT “A”
MARKS OF COURSE

Mark	Description
Trapezoid Course	
Start Mark	Race committee boat at starboard end displaying orange flag
Start Pin	Green cylindrical
1, 2, 3, 4	Orange cylindrical
Finish Mark	Race committee boat displaying blue flag
Finish Pin	Black & white cylindrical
Change of Course	Red cylindrical
Windward Leeward Course	
Start Mark	Race committee boat starboard end displaying orange flag
Start Pin	Green cylindrical
1, 4	Orange cylindrical
1a	Orange & white cylindrical
Finish Mark	Race committee boat starboard side displaying a blue finish flag
Finish Pin	Black & white cylindrical
Change of Course	Red cylindrical
Triangular Course	
Start Mark	Race committee boat at starboard end displaying orange flag
Start Pin	Green cylindrical
1, 2, 3	Orange cylindrical
Finish Mark	Race committee boat at port end displaying a blue flag
Finish Pin	Black & white cylindrical
Change of Course	Red cylindrical
 	

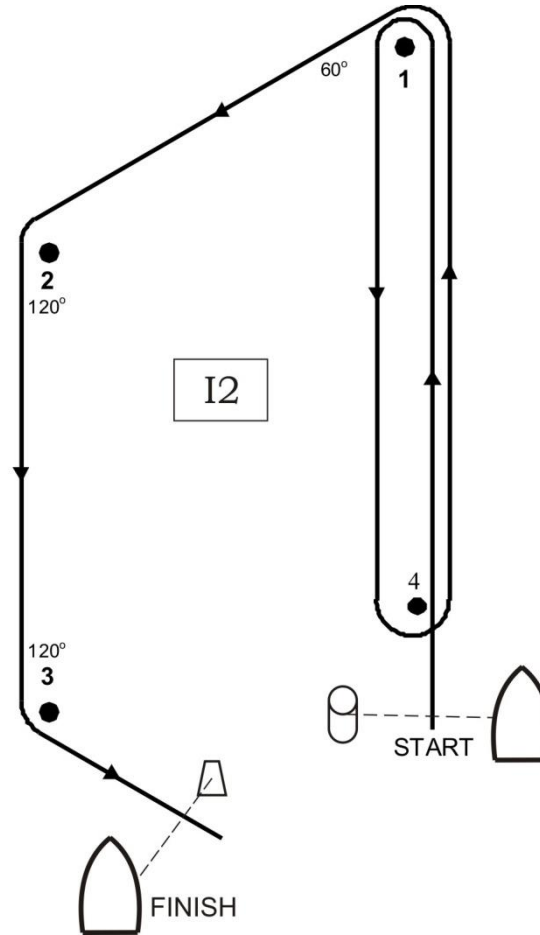
Trapezoid Outer: ALPHA

- O1: S-1-2-3-F
- O2: S-1-2-3-2-3-F
- O3: S-1-2-3-2-3-2-3-F



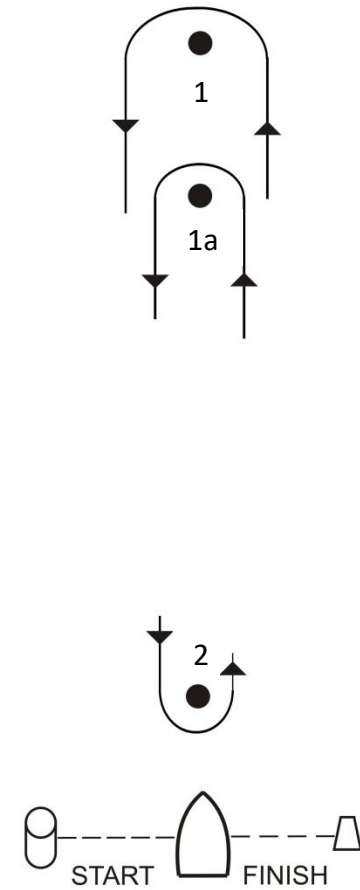
Trapezoid Inner: ALPHA

- I1: S-1-2-3-F
- I2: S-1-4-1-2-3-F
- I3: S-1-4-1-4-1-2-3-F



Windward/Leeward: BRAVO

- L1: S-1-F
- L2: S-1-2-1-F
- L3: S-1-2-1-2-1-F
- L1A: S-1A-F
- L2A: S-1A-2-1A-F
- L3A: S-1A-2-1A-2-1A-F

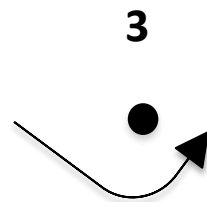
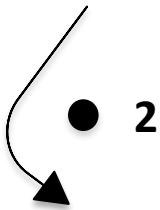


Triangular: CHARLIE

T1: S-1-2-F

T2: S-1-2-3-1-F

T3: S-1-2-3-1-3-1-2-F



START/FINISH