



REGATTA INFORMATION



Here is some information about the Regatta, the Venue and local facilities to help you find your way about and know what to expect. For further information contact:

Club Administration: 4325 7216

Sailing Office: Peter Walsh - 0448 257 216

Latitude Thirty Three Restaurant & Brasserie: 4322 7293

GOSFORD SAILING CLUB (GSC):

GSC is the host club for the Regatta.

This attached handout sets out information about the Club facilities during the Regatta

CLUB FACILITIES:

Opening Hours:

Bar: 11am to 11pm daily

Restaurant: 12pm – 3pm & 6pm to 9pm Mon to Sat. 12pm – 3pm Sun

ATM

Upstairs In the Clubhouse opposite toilets.

GSC Administration:

CEO: Richard Croker

Administration/Reception: Lee Clarke

Office hours:

Monday to Friday: 9.30am to 5pm

Closed weekends

GSC officials:

President: Darren Casey

Vice President: Graeme Sheldon

Commodore: Paul Gulliksen

Club Captain: Geoff Jollow

Temporary Visitors Membership:

All visiting competitors and their guests are required to sign in to the Club and keep their sign in slip as proof of Temporary Membership for the duration of the Regatta

REGATTA OFFICIALS:

Organising Committee: GSC

Race Management:

PRO: Peter Walsh (NRO),

REGATTA:

Race Area

Subject to wind conditions it is a 10 to 20 minute sail from the marina to the starting line. While the Brisbane Water offers challenging racing there are obstructions at the southern end of Point Frederick and shallows around the channel markers at the far southern end of the bay. Details will be provided at the Competitors meeting briefing.

FOOD:

The GSC Juniors parents will be running the Canteen on the Southern side of the club between 9:00 and 13:00.

Sandwiches, Pies, Sausage Rolls, Water, Soft Drinks etc. will be available. All profits go to the Junior Sailing.

After racing there will be a free BBQ sausage for the competitors.

Lunch and dinner is also available in the club. Please go to the website for details

www.gosfordsailingclub.com/dining

Boat Handling Information

Competitors are welcome to arrive at any time in the week leading up to the event but are asked to contact the Clubs marina and Sailing Manager Peter Walsh (044257216) for handling arrangements.

On arrival at the Gosford Club boats and trailers may enter the grassed area adjacent to the Club for rigging and launching preparations. Parking of trailers will not be allowed at the southern end of the Carpark for the duration of the event.

All trailers are to be left in the carpark or street, as the park is used by other organisations not affiliated with the GSC, however boats may be left on the grass area near the water tanks at the South Eastern side of the club house.

Support Boats

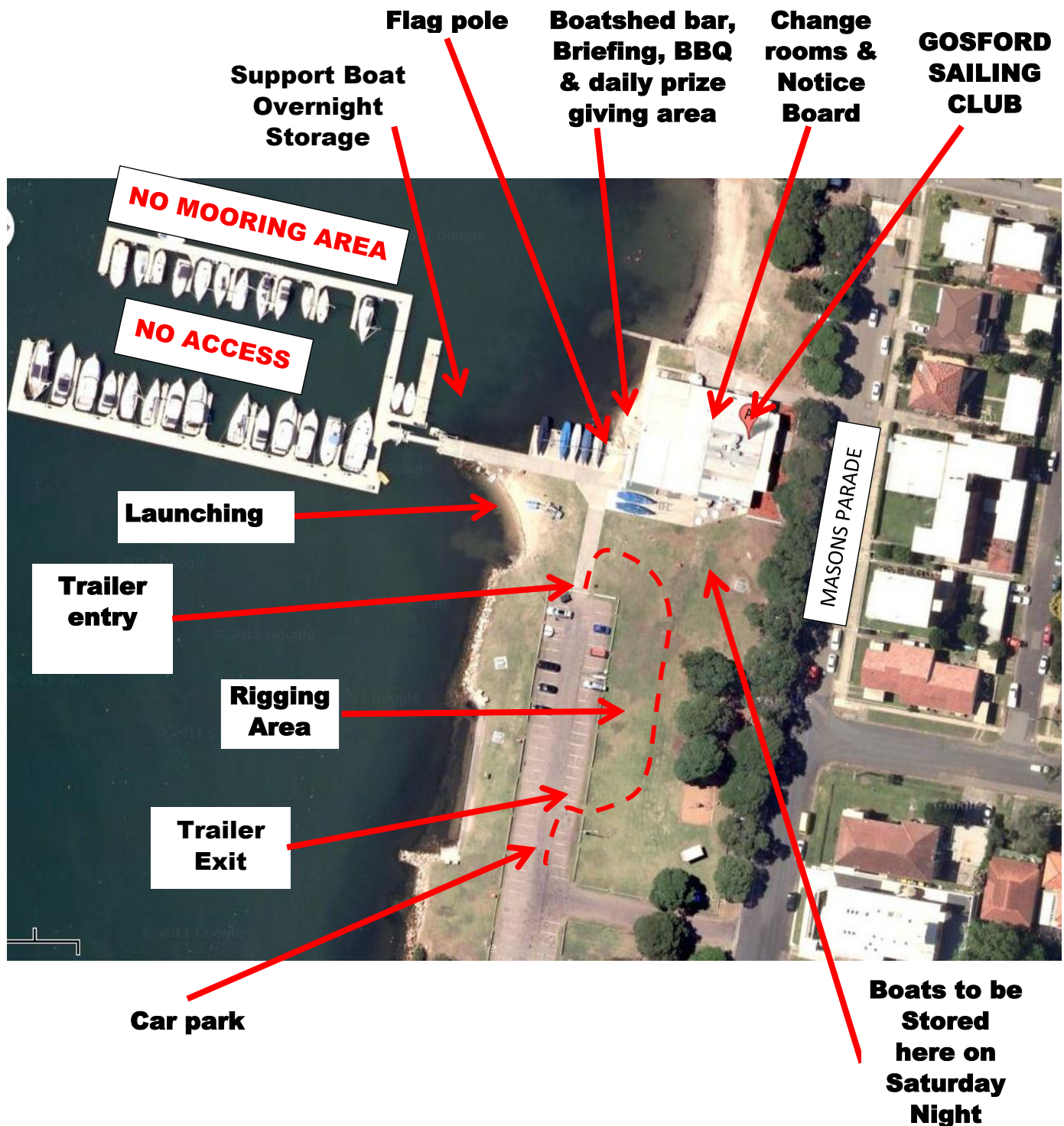
Support boats i.e. Ribs, can be left tied up to the blue floating pontoons and marina at the conclusion of the day once the Echelles have finished using the crane.

The nearest boat ramp is located to the approx. 200m north of the sailing club on Dane Drive.

MAP

Here is a map showing the Club's facilities

Support boat launching ramp is located 200m north of the club on Dane Dr.



ACCOMMODATION:

Caroline Bay Getaway	43391942
Best Western - Gosford Motor Inn	43231333
Gosford Palms Motor Inn	43231211
Ashwood Motor Inn (Opposite RSL)	43246577
Galaxy Motel (Gosford RSL)	43231711
IBIS Budget (Behind McDonalds West Gosford)	43257692
Bermuda Motor Inn	43244366
The Willows Quality Motor Inn	43284666

www.stayz.com.au

www.rent-a-home.com.au

www.takeabreak.com.au

www.hotelsaccommodation.com.au

USEFUL CONTACTS:

Laundry:

24 Adelaide St East Gosford - 4325 3355

1/344 Mann St North Gosford – 4324 1471

Banks:

General opening hours: 9.30am – 5pm Mon to Fri

Westpac: 1/113-117 Mann St Gosford - ANZ: 134 Mann St Gosford

NAB: 141 Mann St Gosford - Commonwealth: 184 Mann St Gosford

Post Office:

Gosford PO - 114 Erina Street East

East Gosford – Victoria Street in Newsagency

Police:

Police Assistance Line – 131444

Gosford Police Station - 4323 5599 - Mann St Gosford

Car Rental:

Avis – 4323 2222 – 322 Mann Street Gosford

Budget – 4325 0636 – York Street East Gosford

Hertz - 4324 9859 - 359-363 Mann Street Gosford

TRANSPORT:

Public Transport:

Train timetables: <http://www.sydneytrains.info/timetables>

Bus timetables: <http://www.busways.com.au> OR <http://www.redbus.com.au>

Taxis:

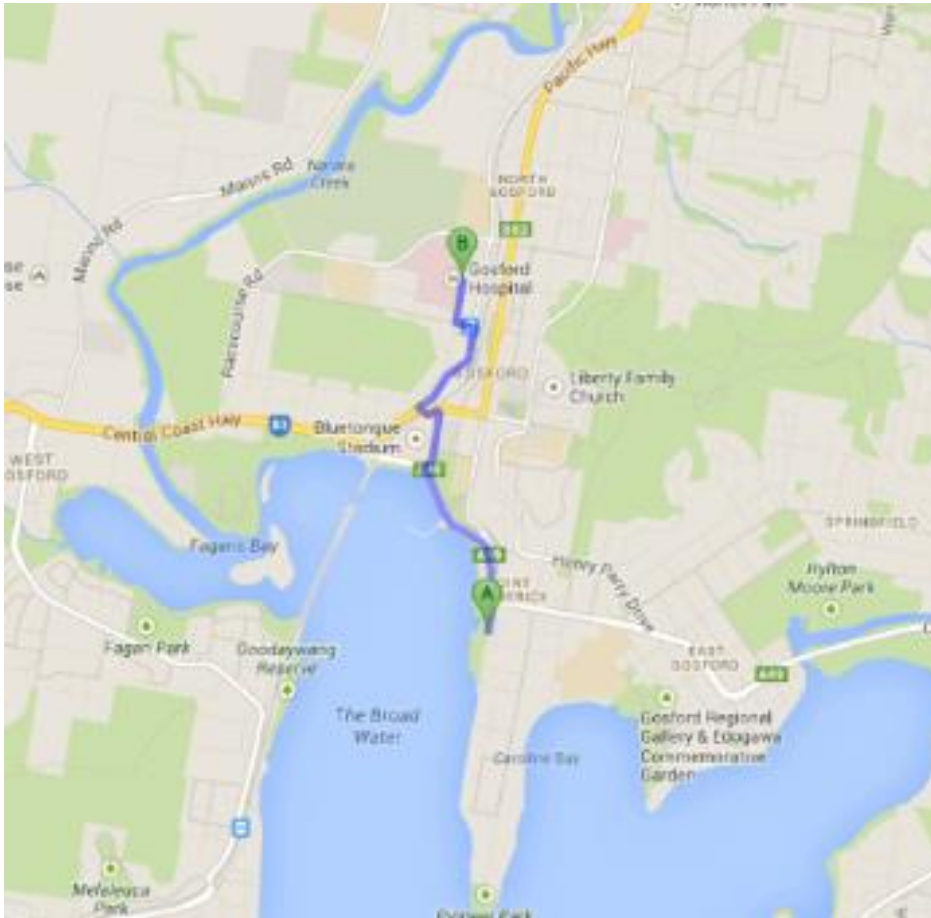
Central Coast Taxis: 131 008

Medical contacts:

Emergency phone number is 000


Gosford Hospital has an Emergency Department and is about 5 minutes' drive from the Club.

Here is a map with directions from the Club.



1. Head north on Masons Parade towards Lynn Ave	go 160 m total 160 m
--	-------------------------

 2. Turn left onto Central Coast Hwy About 48 secs	go 230 m total 400 m
---	-------------------------

 3. Slight left onto Central Coast Hwy/Dane Drive Continue to follow Dane Drive Go through 1 roundabout About 2 mins	go 900 m total 1.3 km
--	--------------------------

 4. Turn left onto Donnison St/Pacific Hwy	go 100 m total 1.4 km
--	--------------------------

 5. At the roundabout, take the 3rd exit onto Showground Rd About 1 min	go 550 m total 2.0 km
---	--------------------------

 6. At the roundabout, take the 1st exit onto Faunce St West	go 97 m total 2.1 km
---	-------------------------

 7. Turn right onto Holden St Destination will be on the left	go 220 m total 2.3 km
--	--------------------------

 **Gosford Hospital**
Holden St, Gosford NSW 2250

For less urgent medical help closest to the Club:

In Touch Health: 4322 0841 - 69 Central Coast Hwy, West Gosford.

Erina Medical Centre: 4365 1977 - 415 Terrigal Dr, Erina.

Wyoming Medical & Dental Centre: 4329 9000 - Kinarra Ave, Wyoming.

Chemsave East Gosford: 4325 2947 - 75 Victoria St, Gosford East.

Chemist Warehouse: 4325 0773 - 125 Mann St, Gosford.

REGATTA SAILING SERVICES:

SAIL MAKERS

Eastwind Sails & Marine: 0417 250 490

Doyles: 49481331 - Lake Macquarie

RIGGERS:

Whale Spars: 4373 1036

FITTINGS

BCF West Gosford 4322 5833

NB Sailsports (Harken fittings & Liros rope): 4340 2223

BOAT REPAIRS:

Sly Boats Works: Simon Smith - 0412 500 424 - onsite at Gosford Sailing Club

WEATHER:

Bureau of Meteorology: www.bom.com.au

NSW RMS: www.maritime.nsw.gov.au

Willy weather: www.willyweather.com.au

Sea breeze: www.seabreeze.com.au