



Melbourne Trailable Yacht Club Inc. Summer Triangle Series 2016 - 2017 Sailing Instructions – Long & Short Courses

- 1. RULES** - All races shall be conducted under the Racing Rules of Sailing, and the Safety Requirements of Special Regulations Part 1, Category "5", of Australian Sailing (AS), except as modified by the sailing instructions.
- 2. ELIGIBILITY** - Races are open to all TRAILABLE YACHTS as specified by the Australian Trailable Yacht and Sports Boat Rule (ATYSBR) and AS Special Regulations Part 1. A boat's entry will not be accepted unless the skipper or owner has completed and signed the current Declaration of Compliance & Safety Equipment Checklist with the MTYC or the boat carries on the hull a current Compliance Sticker.
- 3. VISITOR ENTRY** - A casual entry fee of \$10 for non -members is payable upon signing on with the Race Officer. Visitor's results will be included in the day's race results but will not be included in the Series Results.
- 4. BRIEFING** - Will be held at approximately **9.45 am**, in the car park or as advised by the Race Officer.
- 5. SIGNING ON** -All boats intending to sail, are to advise the Race Officer of their intention to race. Before starting a race, each boat must complete a radio sign on check with the nominated radio yacht. Any boat that does not complete a radio sign on check prior to starting will be considered a Non Starter and will be given a race result of DNS (Did Not Start).
- 6. MARINE RADIOS – VHF** radios must be switched on during the race and tuned to **VHF 72**.
- 7. PERSONAL BUOYANCY** – Unless lifelines are fitted, an approved Personal Flotation Device (PFD type 1 or 2) shall be worn by each crewmember at all times whilst racing. It is further recommended that skipper and crews of yachts wear a suitable PFD when on deck, in conditions such that wearing of a PFD is warranted. Conditions in which a skipper/crew may consider warrant the wearing of PFDs include increased wind speeds, sea state, crew experience and night sailing.
- 8. LIFEBOUYS** - Boats need not comply with Special Regulation 4.21(a) Lifebuoys, provided that a PFD 1 or 2 is worn by each member of the crew.
- 9. RACE CONDITIONS** - If Code flag 'Y' is announced by the Race Officer, PFDs must be worn & it is recommended that storm boards be fitted.
- 10. HANDICAPS** - Race Results will be calculated for two series based on Performance Based Handicap (PBH) and Class Based Handicap (CBH) results. New starters will start from CBH and will gain a PBH over a number of races.
- 11. CHANGES IN SAILING INSTRUCTIONS** - Will be indicated at the briefing.
- 12. COURSES** - The course for the first race of the day will be indicated at the briefing by the Race Officer or confirmed via VHF 72 prior to the start. The course for the second race on the day will be confirmed by the Race Officer via VHF 72, prior to the Warning Signal for that race.

13. STARTING TIMES

1st Race shall be at: 1100hrs

2nd Race start signals will be no less than 10 mins after last yacht finishes the first race.

14. **STARTING LINE** - will be between an **ORANGE FLAG** MTYC MARK at the Port End of the starting line and the nominated Mark (as listed on the **Table of Courses**) to form the starting line.

15. THE START

Races will be started by using Rule 26 with the warning signal made 5 minutes before the starting signal and modified as follows:

No flag signals will be used and the sound signals may be made by one of the competing yachts as nominated at the briefing. The following sound signals shall be made:

•	<i>PRE – WARNING</i>	<i>FOUR SHORT HORNS</i>	<i>6 Min</i>
•	<i>WARNING SIGNAL</i>	<i>SOUND SIGNAL</i>	<i>5 Min</i>
•	<i>PREPARATORY SIGNAL</i>	<i>SOUND SIGNAL</i>	<i>4 Min</i>
•	<i>ONE MINUTE</i>	<i>SOUND SIGNAL</i>	<i>1 Min</i>
•	<i>STARTING SIGNAL</i>	<i>SOUND SIGNAL</i>	<i>START</i>

The Pre –Warning Sound Signals may also be transmitted over the radio on **VHF 72**.

16. **RE-CALLS** - Any yacht that starts early must restart by returning to the pre-start side of the starting line.

17. **FINISHING LINE** - The finishing line will be the the same line as the starting line.

The first boat to finish will record the finishing times of all yachts.

18. **TIME LIMIT – SHORT COURSE**- The leading yacht shall cross the finishing line within 2 hours of the start with remaining yachts to finish within: 30 minutes of the leading yacht to be considered as a finisher.

19. **POSTPONEMENT, CANCELLATION & ABANDONMENT OF RACE** - Will be advised by the Race Officer of the day.

20. **SHORTENED COURSE (SHORT COURSES)**- The leading yacht shall, after **1hour 30 minutes**, stop at the next mark of the course, thus making that the shortened course finishing line. The leading yacht shall then take the finishing times as the yachts pass round that mark & advise all yachts that the race has been shortened via radio or as they round that mark to finish. All yachts must finish within 30 minutes of leading yacht.

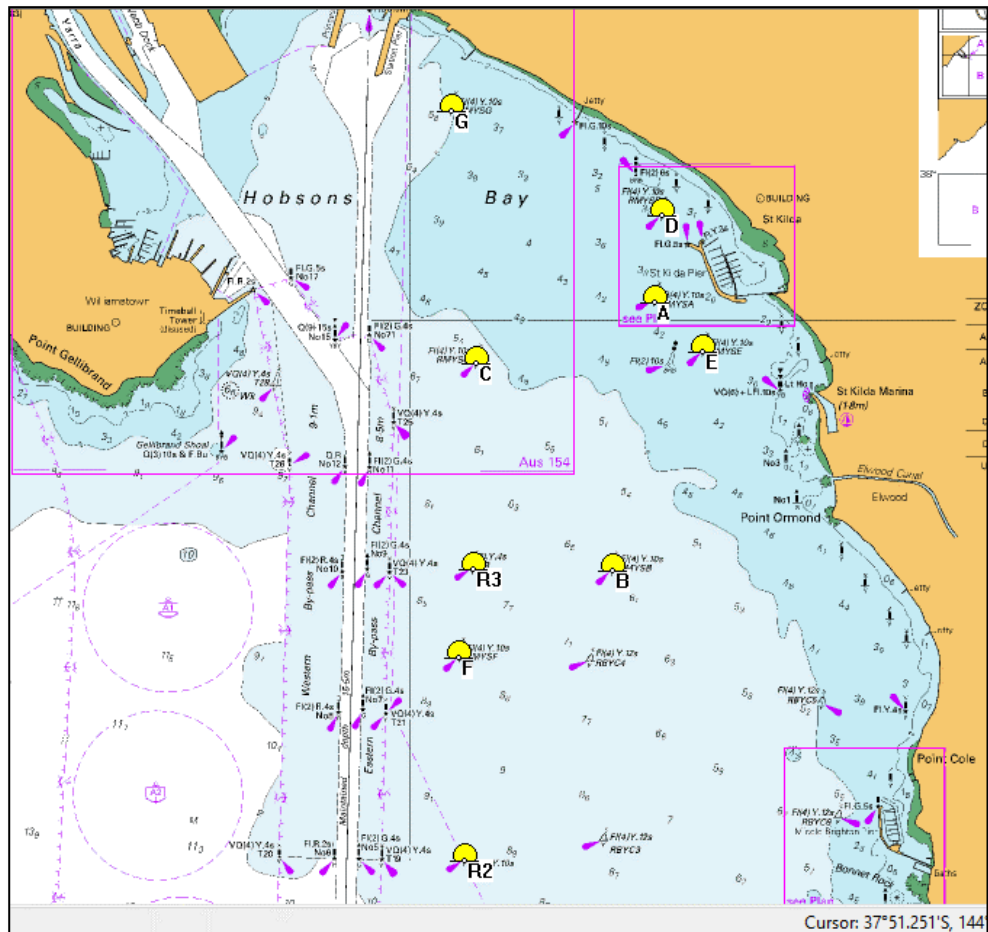
21. **SHORTENED COURSE (LONG COURSES)** - The leading yacht shall consult with the Race Officer at approximately 1430hrs and stop at the next mark of the course, thus making that the shortened course finishing line. He shall then take the finishing times as the yachts pass round that mark & advise all yachts that the race has been shortened via radio or as they round that mark to finish. All yachts must finish within 90 minutes of the leading yacht.

22. **RETIRING YACHTS** – Yachts retiring shall notify if possible the Race Officer or another yacht in the fleet of their intention.

23. **ALTERNATIVE PENALTY** - The **720'** turns penalty as provided in rule 44 of Part 4 (Penalties for breaking the rules) shall apply for infringement of a rule of Part 2 of the racing rules.

24. **PROTESTS** – Protests if necessary will be heard only after an application is made with an associated fee of \$10. The protest form is available from the sailing officer & will be heard in accordance with Racing Rules of Sailing.

SAILING AREA, APPROXIMATE MARKS LOCATIONS and TABLE OF COURSES



Starting Line and Finishing Line will be between the nominated mark and a laid MTYC Orange Flag mark.

No	Wind	Start at:	Marks					Finish at:	Course	Nm (Approx)
S1	N	Start B	A	C	B	A	-	Finish B	Port	5.0
S2	NE	Start B	E	C	B	E	-	Finish B	Port	6.0
S3	E	Start C	E	A	C	E	-	Finish C	Port	5.5
S4	SE	Start C	B	E	C	B	-	Finish C	Port	6.5
S5	S	Start A	B	C	A	B	-	Finish A	Starb	6.2
S6	SW	Start E	R3	B	E	R3	-	Finish E	Port	7.1
S7	W	Start E	C	B	E	C	-	Finish E	Port	6.4
S8	NW	Start E	G	C	E	G	-	Finish E	Port	9.1
S9	Any	Windward – leeward course – 2 laps (see over page)								
S10	Any	Windward – leeward course – 3 laps (see over page)								

LONG COURSES

No	Wind	Start at:	Marks										Finish	Course	Nm Approx
L1	N	Start A	D	C	F	B	D	B	D	C	F	B	Finish A	Port	14
L2	S	Start A	B	F	C	D	B	D	B	F	C	D	Finish A	Starb	14
L3	SW	Start E	R3	G	E	R3	E	R3	G	-	-	-	Finish E	Starb	16
L4	W	Start E	C	F	E	C	E	C	F	E	C-	F	Finish E	Port	16
L5	NW	Start E	G	R3	E	G	E	G	R3	-	-	-	Finish E	Port	15

Windward / leeward courses – all marks to port.

The Race Officer will nominate the **Windward mark** and **Leeward mark**. (eg RMYS Marks A, B, C, D, E, F etc).

Course No S9 - 2 laps

Start – 1 - 2 - 1 - Finish

Course No S10 - 3 laps

Start – 1 - 2 - 1 – 2 – 1 - Finish

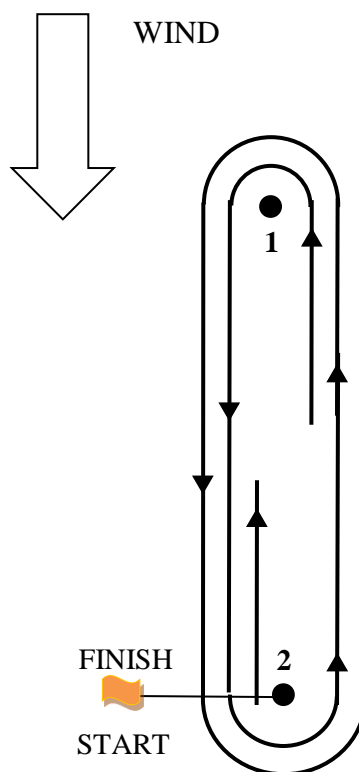


Fig 1: Diagram of course configuration

Starting Line - The starting line will be between the nominated mark and a laid MTYC Orange Flag mark.

Finishing Line - The finishing line will be the the same line as the starting line.

Marks A,B,C, D, E, F and G are RMYS labelled yellow Special Marks.

ID – Isolated Danger mark (navigable for trailable yachts)

R3 – Recreational Buoy – yellow, cylindrical, labelled R3.

26. INDEMNITY

- All participants compete in races conducted by the MTYC at their own risk.
- The MTYC is not responsible for the sea worthiness of a yacht whose entry is accepted, or the sufficiency or adequacy of its equipment or its crew. It shall be the sole responsibility of each skipper to decide whether to or not to start or continue to sail in any race.
- The MTYC accepts no responsibility for any damage, injury or loss sustained by any boat, equipment or crew and/or persons associated, whether ashore or afloat and whether or not occurring during any rescue operation.
- Each boat shall have \$10,000,000 Third Party Public Liability Insurance.