

GOSFORD SAILING CLUB SAILING INSTRUCTIONS for ALL SATURDAY FLEET EVENTS 2016 / 2017

SPORTSMANSHIP AND THE RULES

GSC is affiliated with YNSW and conducts all sailing in line with World Sailing RRS and AS Special Regulations and recommendations. Competitors in the sport of sailing are governed by a body of rules that they are expected to follow and enforce. A fundamental principle of sportsmanship is that when competitors break a rule they will promptly take a penalty, which may be to retire (RRS 44).

1 RULES

- 1.1 The organising authority is the Sailing Committee of the Gosford Sailing Club Limited (GSC).
- 1.2 All racing will be governed by the Racing Rules of Sailing the Prescriptions and Special Regulations of Australian Sailing 2013–2016 till December 30th and then [20 17- 2020](#) RRRS, the relevant One Design and Class Association rules if appropriate all as modified by these sailing instructions.
- 1.3 AS special regulations addendum A Part 2 ("off the beach boats") shall apply to all dinghy classes.
- 1.4 AS Special Regulations Part 1 for racing boats shall apply to Etchells and Sports Boats.
- 1.5 All GSC Events are subject to NSW Maritime Regulations and the GSC Aquatic License Issued by NSW RMS.
- 1.6 Should conflict exist between the General Notice of Race and the Sailing Instructions, the Sailing Instructions shall over-ride.
- 1.7 For the purpose of these rules the Race Committee will consist of the Commodore, Sailing Manager, OOD and the Fleet Representative of the particular sailing fleet involved in the event or their nominated delegate.

2 NOTICE TO COMPETITORS

- 2.1 Notices will be posted on the Official Fleet Notice Board in the Club foyer and on the GSC website.

3 CHANGES TO INSTRUCTIONS

- 3.1 Changes to the Class or Fleet Sailing Instructions may be made by the relevant Class/ Fleet Sailing committee and will be posted not later than two (2) hours prior to the commencement of the day's racing.
- 3.2 Prior to the warning signal for the start of a race, the Race Officer may display Code Flag 'L' with 1 sound signal, and inform yachts intending to race (either by hail or radio) of a change to the Sailing Instructions. The onus is on the entrants to communicate with the Race Officer.

4 SIGNALS MADE ASHORE

- 4.1 Signals made ashore will be displayed from the GSC Flag mast located on the South Western side of the Clubhouse
- 4.2 When AP is displayed ashore for boat starts the warning signal will be made 'not less than 30 minutes' after AP is lowered. This amends Race Signal "AP"
- 4.3 On combined race days when "AP" over code flag "0" is displayed from the GSC Flag Mast this signal shall apply to all OTB and Etchells Fleets. This amends Race Signal "AP"

- 4.4 On combined race days when "AP" over code flag "J" is displayed from the GSC Flag Mast this signal shall apply to all Junior OTB Fleets. This amends Race Signal "AP"
- 4.5 On combined race days when "AP" over code flag "Y" is displayed from the GSC Flag Mast this signal shall apply to all Yachts Fleets. This amends Race Signal "AP"
- 4.6 When Code Flag "C" is displayed from the GSC Flag mast this signal is to indicate a club start for the race. This amends Race Signal "C "

5 SCHEDULE OF RACES

5.1 The dates shall appear in the Fleets Official Program of the Gosford Sailing Club.

5.2 The Race Committee may make changes to this schedule at any time.

6 FLAGS / BURGEES

6.1 The flags and burgees to be used in Club races shall be:-

- (a) The International Code of Signals and numeral pennants as described in the Racing Rules of Sailing
- (b) The Gosford Sailing Club burgee on official boats.
- (c) The recognized relevant Class Association or division flag.

6.2 The Class/Division Start Flags for racing are:

Class or Division	Flag
Laser Standard	Laser Class Flag (white Background)
Laser Radial	Laser Class Flag (Blue Background)
Laser 4.7	Laser Class Flag (yellow Background)
All Laser Class Start	Laser Class Flag (Red Background)
Mixed Fleet	Fluro Green with Black M Flag
16' Skiffs & Sports Boats	16' Skiff Class Flag
Etchells	Etchells Class Flag
A Class / Catamaran	Orange Flag with Back Multi hull symbol

7 RACING AREA

7.1 The racing area shall be on the Brisbane Water, N.S.W.

8 MARKS

- 8.1 A class marks numbered 1 to 9 are yellow Permanent Marks their approximate position is described on Inshore Marks Chart in Attachment 4
- 8.2 Mixed Fleet marks shall be white cylinders- fluro green bands maybe attached.
- 8.3 Laser Fleet marks shall be orange cylinders
- 8.4 New Marks (Change Course) for Mixed and Laser Fleets shall be their respective buoys with a black band attached
- 8.5 Etchells Fleet marks shall be Red spherical buoys

8.6 16' Skiffs & Sports boat Fleet marks shall be yellow cylinders

8.7 The Start Marks will be a race committee vessel displaying a blue Flag and a buoy displaying an orange flag

8.8 The Finish Marks will be a race committee vessel displaying a blue Flag and a buoy displaying a pink and blue quartered flag. For downwind Etchells Fleet finishes boats shall finish between Marina and the yellow marina mark. A committee boat displaying a blue flag may be nearby the yellow mark or boat will be finished by the RO on the Club deck and displaying a blue on station board.

9 COURSES

9.1 **Mixed Fleet Courses:** The courses are triangles with windward returns. The course number signals the number of laps sailed, if in the event of establishing an extra division then division 2 will sail 1 less lap for the course number displayed.

9.1.1 Mixed fleet course to be sailed shall be indicated by a yellow numeral displayed on a black background no later than the Warning Signal.

9.1.2 The diagram and table in Attachment 2 shows the course (port course shown), and describes the order in which marks are to be passed

9.1.3 A Red flag displayed from the Start Boat means all marks shall be left to Port. A Green flag displayed from the Start Boat means all marks shall be left to Starboard.

9.1.4 Where possible, a target race time of 70 minutes for 2 race days and 1.45 hours for single race days will be scheduled, however, if this is not possible, it will not form valid grounds to protest.

9.2 **Etchells Fleet Courses:** Courses shall be windward leeward as described in Attachment 1 and show the courses, including the order in which marks are to be passed and the side on which each shall be left

9.2.1 No later than the Warning Signal, the race committee boat may display the approximate compass bearing of the first leg. For a downwind finish boat shall finish between the marina and the yellow marina mark the committee boat will signal Code flag C to indicate a downwind (Club) Finish

9.2.2 Where possible, a target race time of 90 minutes will be scheduled, however, if this is not possible, it will not form valid grounds to protest

9.3 **Laser Fleet Courses:** The course shall be trapezoidal, as described in Attachment 3. The course (port course example), shows the order in which marks are to be passed. The length of the legs of the course may be altered suit the prevailing conditions and any variation in the course from the diagram and/or the target race time shall not be grounds for protest.

9.3.1 The course for single race day pointscore races shall be 4 laps except that for a scratch start Radial and 4.7 Rig Junior Sailors sail 3 laps and may sail an additional lap – total 4 laps and in doing so become eligible for the senior as well as junior award for the day.

9.3.2 The course for two race days shall be two laps for all Laser rigs.

9.3.3 Club Championship races for junior and senior sailors will be 4 laps for Standard and Radial Rigs and 3 laps for 4.7 Rigs.

9.3.5 A Red flag displayed from the Start Boat means all marks shall be left to Port. A Green flag displayed from the Start Boat means all marks shall be left to Starboard.

9.3.6 The length of the legs will be set to target a race time of approximately 1¼ hours.

9.4 **16' Skiffs and sports Boats Fleet Courses:** Courses shall be windward leeward as described in Attachment 4 and show the courses, including the order in which marks are to be passed and the side on which each shall be left

9.4.1 No later than the Warning Signal, the race committee boat may display the approximate compass bearing of the first leg.

9.4.2 Where possible, a target race time of 100 minutes will be scheduled, however, if this is not possible, it will not form valid grounds to protest

9.4 **A Class Fleet Courses:** Windward – leeward course sailed in one three lap race utilising the Permanent Fixed Rounding Marks as described in the table in Attachment 5. The diagram shows the approximate position of GSC fixed mark.

10 AREAS THAT ARE OBSTRUCTIONS

10.1 The following areas are designated as obstructions: -

- (a) Boats shall not pass while racing between the outside line of registered moorings and the adjacent shoreline.
- (b) Etchells and Sports Boats shall not pass while racing between the South Cardinal and the Isolated Danger marks approximately 400 metres south west of Point Frederick and the adjacent shorelines of Point Frederick.

11 THE START

11.1 Races shall be started by using rule 26 with the warning signal given 5 minutes before the starting signal.

11.2 Championship and Pointscore Series Starts

SIGNAL	FLAG and SOUND	MINUTES BEFORE STARTING SIGNAL
WARNING	Class Flag; Displayed with 1 sound	5
PREPARATORY	P, I or Black; Displayed with 1 sound	4
ONE MINUTE	Preparatory removed; 1 long sound	1
STARTING	Class flag removed; 1 sound	0

11.3 The warning signal for each succeeding Class / division shall be made with or after the starting signal of the preceding division.

11.4 Laser Fleet Starts:

11.4.1 Club Championship races shall have separate starts for Standard and Radial Rigs. 4.7 Rig will have a separate start provided there are more than 5 starters. If there are 5 or less 4.7 Rig starters then the 4.7 start will be combined with the Radial Rig start. The class flags for the fleets will be the standard Laser class flags which are for Standard, white for Radial, green and for 4.7 yellow. Where the Radial and 4.7 fleets are combined the class flag shall be the Radial green Laser flag.

11.4.2 Pointscore races shall have a single start where Standard Rig, Radial Rig and 4.7 Rigs all start together unless a handicap start is scheduled. Where all Laser fleets are combined the class flag will be a red flag with a Laser logo

11.5 Handicap Starts: . When a handicap start is used in a Pointscore Series race, each competitor shall start at the fall of the number corresponding to their minute handicap and sail the normal course.

11.6 A boat starting later than six (6) minutes after her starting signal will be scored Did Not Start without a hearing. This changes RRS A4.

11.7 Boats whose warning signal has not been made shall keep clear of the starting area and all boats whose warning signal has been made. Attention is drawn to RRS22.

11.8 The Race Committee may attempt to hail OCS boats, by sail number, on VHF channel 73 the Race Frequency. Failure of equipment, failure to hear a hail, delay in hailing or the order in which hails are given will not be grounds for redress. This changes RRS 62.

12 START LINE

12.1 The Start line shall be between a staff displaying a Blue flag on the Race Committee Vessel at the starboard end and the mark with an Orange flag at the port end.

12.2 An inner distant mark may be laid near the committee boat. If laid, boats approaching the line to start shall pass this mark to starboard.

12.3 A Race Committee boat stationed near Mark 1 will display the sail numbers of boats that have infringed RRS 30.3. A Race

Committee boat may also be used along the first windward leg for such display. Boats identified shall promptly leave the race course and not interfere with boat still racing. Boats failing to leave the course will be scored DNE without a hearing. This changes RRS A5.

13 STARTING ORDER and TIMES

13.1 The approximate time to the day's first warning signal:

Class	Eastern Standard Time of First Warning signal	East Daylight Saving Time of First Warning signal	Notes
Etchells	1325	1355	
Mixed Fleet	1330	1400	
Lasers	1335	1405	Separate Class Starts for Championship
16, Skiffs & Sports Boats	1340	1410	1350 and 1430 on Laser Championship Days
A Class	1345	1415	1355 and 1435 on Laser Championship Days 1350 warning on Club championship days

13.2 Fleets with two races scheduled for the day the warning signal for the next race will be ASAP after race 1 on the day

14 RECALLS

14.1 All Saturday Fleet series –

- (a) Individual Recalls shall be in accordance with RRS 29.1
- (b) General Recalls - For any Class which has a General Recall the class shall restart after the scheduled start sequence. So that subsequent classes will follow on using the normal sequence. General recalls will be signaled by the First Substitute with two sound signals this flag will remain displayed for four (4) minutes and will be removed at the one minute signal for the succeeding Class. To alert the General recall class the first substitute flag with the recalled Class flag will be displayed along with one sound signal. The First Substitute Flag will remain displayed for one minute and will be removed when the Preparatory Flag is displayed. This amends RRS 29.2 and Race Signals.

15 CHANGE OF COURSE AFTER THE START

- 15.1 To change the next leg of the course, the Race Committee will move the original mark (or move the finishing line) to a new position and will be signaled in accordance with RRS 33.
- 15.2 Pointscore and Club Championship races may be shortened at the discretion of the Race Committee. In accordance with RRS 32.1 the Race Committee will signal a shortened course by displaying code flag S with two sounds. If the race committee signals a shortened course (displays flag S with two sounds), the finish line shall be, at a rounding mark, between the mark and a staff displaying code flag S and blue on station flag) or when code flag S is displayed alone by a mark boat then boats shall proceed to the normal finish line. This amends RRS 32. 2(a)

16 THE FINISH

- 16.1 The Finish line shall be between a staff displaying a Blue flag on the Race Committee Vessel at the Port end and the mark with a Blue and Pink quartered flag at the Starboard end.
- 16.2 Boats shall not pass through the Finish Line in either direction when the committee vessel is on station (Flying the Blue on station Flag), except when finishing the race. Failure to observe this rule will result in the Boat being scored DNF. This alters RRS 28

17 PENALTY SYSTEM

- 17.1 For the Etchells A Class and Sports boats the penalty for breaking a rule of Part 2 of the RRS shall be a One Turn Penalty (one tack and one gybe in the same direction).
- 17.2 For all other fleets the two turns penalty shall apply

18 TIME LIMITS

- 18.1 Mixed and laser class fleets the time limit shall be two (2) hours from the class starting signal. When a yacht finishes within the time limit, the race shall be valid only for those vessels that finish within 30 minutes of the first yacht, or within the time limit, whichever is the later.
- 18.2 Etchells, A Class 16'Skiffs and Sports Boats a time limit of 150 minutes shall apply for all yachts in each race

19 PROTESTS MEDIATION AND REQUEST FOR REDRESS

- 19.1 Protests shall be delivered in writing to the Sailing Office Protest Box within 2 hours after the finish time of the last boat in her Class (or in the last race of the day when multiple races are conducted) or with the OOD within the time limit.
- 19.2 The time limit for lodgment of a protest may be extended if there is good reason to do so. This amends RRS 61.3
- 19.3 The time limit for lodgment of a redress will 24hrs after the posting of the race results in which redress is sort.
- 19.4 The parties to a protest will be advised by notice posted on the official notice board within one hour of the close of the time limit for lodgment of protests, of the time and place and order for the hearing of protests. Posting of such notices shall constitute notification to the parties under RRS 63.2.
- 19.5 For protests involving an alleged breach of a rule of RRS part 2, a mediation hearing may be held prior to a protest hearing. This changes Part 5, Section B
- 19.6 After a written protest is lodged, one representative from each boat will meet with the mediator. No witnesses will be permitted at this hearing.
- 19.7 A boat that accepts fault at a mediation hearing will be penalised by having her race score increased by 30% of the difference between the boats finishing score and the score for DSQ in her division or class, rounded to the nearest whole number. All other boats scores will remain the same. Once accepted, this decision is not subject to reopening, except by the jury. This alters RRS 63, 64.1(a), 66 and Appendix A.
- 19.8 The acceptance of the mediator's opinion cannot be grounds for redress or reopening. This changes RRS 60.1,62 and 66.
- 19.9 The mediator may be a member of any subsequent protest committee or may observe and give testimony to the protest committee.
- 19.10 If the mediator refers the case to a protest hearing, or if the jury initiates a reopening, any penalty given for a breach of rule of Part 2 may be the mediation penalty.

20 SCORING

- 20.1 The Low points score system as described in RRS Series with the following modifications:
 - a) All fleets to score Pointscore and Championship
 - b) A boat which did not finish scores the points for the finishing place one more than the number of boats entered in the race.
 - c) A boat which was disqualified scores the points for the finishing place five more than the number of boats entered in the race.
 - d) A boat which did not start in a race scores the points for the finishing place one more than the number of boats entered in the respective series.

- e) To rank as a starter, a competitor must be in the area of the period immediately before the starting sequence. If there is any doubt about whether a boat shall rank as a starter, the Class Executive shall make a ruling.



20.2 Club Championship Series points shall only be awarded to competitors who have competed in more than half of the club races. Both Pointscore and Club Championship Series races will count for this qualification and two race days will count as a single race for this purpose. Club Championship race results shall be provisional until all Club Championship and Pointscore races have been completed. Competitors who have not competed in more than half of the club races as defined above will then be removed from the Club Championships score sheet and their points re-allocated.

20.3 Club Point score Series points shall only be awarded to competitors who have competed in more than half of the club races. Club series results shall be provisional until all Club Championship Series races have been completed. Competitors who have not competed in more than half of the club races as defined above will then be removed from the Series score and their points re-allocated.

20.4 Club Championship points shall only be awarded to vessels sailed by a skipper from within the normal crew, provided the Race Committee, on written application, may approve of such substitute skipper. Written application must be lodged with a member of the Race Committee at least one (1) hour prior to the commencement of the Championship heat.

20.5 Casual entrants may be accepted in a race and will be scored for the race but will not score points for the series. Series entrants will be scored points in the series as if there were no casual entrants. This changes RRS Appendix the Sailing Committee, recommends such transfer of points.

20.6 A non-member shall be deemed to be a visitor for up to and including three races in any season. A visitor shall be counted as a starter, with all rights accorded to the visitor while racing and have their finishing details recorded, but will not be credited with a finishing position. A visitor who subsequently joins Gosford Sailing Club shall be considered to be a Financial Member from the time they lodge their application for membership and shall be credited with their finishing positions in their up to three races completed as a visitor before this time. Credited race positions of competitors that finished behind the new member in their up to three visiting races shall not be retrospectively adjusted.

20.7 LASER FLEET Scoring system

- a) Competitors, who change boats during the season, shall carry all results obtained personally.
- b) Club Championship Series and Handicap Series over Club Championship races shall have one discard. Pointscore Series shall have three discards.
- c) Sprint Series will be run over six two race days (twelve races scheduled). The individual races will count towards the Sprint Series. There will be two discards. The two individual race places will be added to determine places for a single pointscore result for that day. In the event of a tied result for the day the RRS Appendix A Paragraphs A8.1 and A8.2 will be used to resolve the tie.

20.9 ETCHELS FLEET SCORING SYSTEM

- a) Club Championship: 75% of the total races sailed (rounded up) for each series shall be counted to determine the Club Championship. A minimum of 5 races shall be required to be sailed. In the event of a Championship heat not being sailed on the scheduled day it will be held on the first reserve day shown on the program. Should that race also not be sailed it will be held on the next reserve day and so on.
- b) Series Point Score: There shall be three series, SPRING; SUMMER & AUTUMN. A minimum of 4 races shall be sailed in each series. 75% of the total races sailed (rounded up) for each series shall be counted to determine series results. The winner of each series shall be the yacht that aggregates the least number of points.
- c) Seasons Point Score: The sum of the three series results shall then determine the Season's Point Score placing's should a yacht be replaced during the season, all points shall be transferred to the replacement yacht, providing the owner and crew of the replacement yacht are the same as on the first.
- d) **Most Fastest Times:** All races, points score and championship, will count to determine the "Most Fastest Times" result. The winning yacht on the day shall be the fastest yacht helmed by a regular member of the crew and shall be awarded one point.

20.10 MIXED FLEET SCORING SYSTEM.

- a) There shall be three Pointscore series: Spring Pointscore, Summer Pointscore, and Season Pointscore.
- b) Each Series shall be scored independently of each other.
- c) When 3 or more boats of the same class compete a class result may be awarded in conjunction with the overall fleet result

20.11 FIREBALL CLASS CHAMPIONSHIP

- a) The prescriptions in this section replace those relating to scoring in the GSC Sailing instructions. Nominated boats will be eligible for the Club Championship. Points for Club Championship series shall be awarded in accordance with the "low points system" of the current RRS. The Club Championship series for the season shall comprise a total of six heats as listed in the Fireball Sailing Program, the best five results of which shall count for each Nominated Boat entered. In the event of one or more heats being abandoned, all results will count. For Club Championship races the following scores shall be awarded. For DNC, the number of entrants in the series plus three, for DNS, the number of starters in the race plus two, for DNF, the number of finishers in the race plus one and for DSQ, the number of finishers in the race plus three.

2	Start- 1-3-1-2-3-1-2-3-Finish	60* - 60* - 60*
20.12 A CLASS SERIES SCORING	Start- 1-3-1-2-3-1-3-1-2-3-Finish	60* - 60* - 60*
4	Start- 1-3-1-2-3-Finish	70* - 50* - 60*

- a) There shall be 3 handicap series sailed sequentially throughout the year, with a Class Championship series spread evenly over the season. All results are also aggregated for a "Total pointscore" award at season's end. Boats can discard one result from each series for final score. First place shall attract of a point, with second place 2 points, etc, with lowest final score winning. Handicap series shall be sailed with the individual skipper's last 3 performances determining his personalized rating for each race. Class Championship ratings are gathered from V.Y.C. Yardsticks, with adjustments made by the handicapper for spinnaker or prototype boats as permitted by the committee..

21 AVERAGE POINTS

- 21.1 Where any boat is representing the Club in National, State, Class sanctioned events or the Yachting NSW Youth Championship or Inter-Club events or due to commitments of race management duty it may be eligible for average points in.
- 21.2 Average points will be scored for that race the average of the points they were awarded for the three Pointscore Series races prior to the event. This average will include points for DNF, DSQ etc where relevant. If three races had not been sailed prior to the event then the subsequent one, two, or three races (to make a total of three races for the average) shall be used in the calculation.
- 21.3 Unless acting on a race duty boat, competitors to be eligible to claim average points and to keep the race scorer/recorder informed of their claim to them, competitors shall submit a letter/email to the race scorer/recorder or Sailing Office at least one hour prior to the scheduled race for which they will be away for. Failure to submit the claim noted above will result in the competitor scoring a DNC for that race.

22 HANDICAPS and RESULTS

- 22.1 Mixed Fleet, NS14s, and Fireball Classes the VYC Yardstick System will be used to determine race pointscore results.
- 22.2 The initial handicap for each Nominated Boat shall be determined by the Fleet Class Handicap Committee based on the results of each Nominated Boat's first three races. Handicaps will be calculated using a "Back-Calculated Handicap" method.
- 22.3 These will be calculated at the conclusion of each race and submitted to the Club Commodore or his representative on the day.
- 22.4 When 3 or more boats of the same Class compete a class scratch trophy may be awarded.
- 22.5 Sports Boats the Australian Sports boat TCFs will be used to establish a boats initial TCF this will then be adjusted by the VYC performance handicap system. The boats with the shortest elapsed time will the race results will be calculated by the application of the AMS Time Corrector (first and so on. The Race Committee may use AMS results in conjunction with handicap results for any series.
- 22.6 The Handicap Committee reserve the right to alter a yacht's handicap should it be felt a significant change to a yacht's performance has occurred (whether declared or otherwise), or if a handicap is deemed inappropriate.
- 22.7 LASER FLEET HANDICAPING- For handicap races a Time Correction Factor (TCF) shall be used. Each competitor's elapsed time will be multiplied by their TCF to establish their corrected handicap time.
- 22.7.1 Handicaps earned in one season shall be carried over to the subsequent season.
- 22.7.2 New competitors to the fleet will not be allocated a handicap until they have sailed three races. In each of their first three races, they will have a dummy TCF calculated that results in them finishing in the middle of the fleet for that race. (i.e. number of starters divided by two, if this is not an integer, it shall be rounded up to the next highest whole number). The finishing position shall not affect the finishing positions of the rest of the fleet, i.e. there will be more than one person achieving this mid fleet position, but it will not be considered as a tie and the next competitor in the fleet shall score this position plus one. Their first official handicap, for the fourth race in which they compete, will be the average of their calculated dummy TCF's from their first three races rounded to

the second decimal point i.e. 0.85.

22.7.2 Competitors shall declare their nominated rig, Standard, Radial or 4.7 before their first race for the season for each of the Season Pointscore Series and the Club Championship Series. They may sail with any other rig at any time, but when they do change from their nominated rig to a larger rig 0.03 will be added to their TCF. When changing from their nominated rig to a smaller rig 0.02 will be added to their TCF. When reverting to their nominated rig the TCF variation shall be removed.

22.7.3 The Class Executive may adjust handicaps due to altered circumstances at any time.

22.7.4 To correct for their sailing fewer laps, nominated 4.7 Rig competitors shall have their actual elapsed time divided by 'x' before applying their TCF.

22.7.5 Under 4.6 above, 'x' shall be 0.75 unless the race is shortened. If the race is shortened, 'x' shall be the number of laps completed by the 4.7 fleet divided by the number of laps completed by the other rigs.

22.7.6 On the two race days Sprint Series handicaps will be the same for each of the two races. Handicaps will be adjusted for the following race based on the single pointscore result determined as per paragraph 3.5 above.

22.7.7 In the event of only one race being completed on a two race day then the single elapsed time multiplied by the TCF will be used to calculate the handicap result for that day.

22.7.8 The handicap for the following week's race shall be adjusted on the basis of the Pointscore race handicap.

22.7.9 The highest TCF shall be 1.00 (corresponding to scratch). If a handicap adjustment results in one or more competitors having a TCF greater than 1.00 then the TCF of all starters in the race will be reduced by the difference between the highest TCF minus 1.00 and then the competitor with the highest TCF will be given a TCF of 1.00.

22.7.10 TCF's for the Handicap in the Club Championship Series will be set to the same value as the pointscore TCF on the day that the first Club Championship heat is sailed. TCF's for this series will then be adjusted independently of the pointscore TCF's based on the Club Championship Series handicap results as follows;

22.7.11 The highest TCF for the Club Championship handicap series shall be 1.00. Adjustments as per 4.11 shall be made to achieve this.

22.7.12 In a handicap start race the normal handicap will be used at the start. If a sailor elects to change rig under provisions of paragraph 20.8(i) of this document, then the two or three-minute adjustment as outlined in paragraph 20.8(i) will be made to their finish time after the race to determine the final places.

23 DIVISIONS and CLASSES

23.1 Classes or Divisions may be formed or abandoned at the discretion of the Race Committee 1

23.2 When 3 or more boats of the same class compete a class result may be awarded in conjunction with the overall fleet result

24 SAFETY – Sign On and Off and Crew Requirement

24.1 All boats shall Sign On.

24.2 **Sign-on and Sign-off.** The requirements of this instruction are specified for the safety of competitors. Failure to comply may lead to disqualification.

a) A Sign on and sign-off sheet shall be located in the outside the GSC sailing office

b) The skipper or crew of each entrant shall personally sign on before the start of each race. Failure to sign on before the start of a race may result in the boat being recorded as Did Not Start without a hearing. This changes rule 63.1 & A5.

c) The skipper or crew of each entrant shall personally sign off for each race within the protest time limit of the day's racing. Failure to sign off within the time limit may result in the boat being recorded as Did Not Finish without a hearing. This changes rule 63.1 & A5.

24.3 In the event of late entry to the start area competitors may then sign on with start boat either by hail or VHF radio channel 73

24.4 Etchells and Sports Boats will have deemed sign off by crossing the finish line.

24.5 Competitors who withdraw from a race shall notify Race Officials verbally that they are leaving the racing area, or by radio from the clubhouse if they have already left the racing area. This is an important safety matter and failure to comply may result in the competitor being scored as a non-starter.

24.6 Etchells and Sports Boats retiring must notify the OOD by either hailing or radio VHF 73, or any other means as soon as possible. This is an important safety matter and failure to comply may result in the competitor being scored as a nonstarter.

24.7 Safety checks for compliance with YA Special Regulations Parts 1 may be carried out before or after any race.

24.8 All competitors using outboard hiking devices, trapeze or wings shall wear an Australian Standards Association classification of PFD2 or higher in the designed manner.

25 LAUNCHING

25.1 In the event an Etchells is unable to be launched due to a technical failure of the GSC equipment the days scheduled event may be postponed

25.2 The GSC may run a special event for yachts that have been launched in lieu of the scheduled event

26 MINIMUM STARTERS

26.1 A minimum of two yachts must start to constitute a valid race.

26.2 A single boat will be awarded points on proper completion of the course.

27 SEVERE WEATHER and WIND STRENGTHS

27.1 At the discretion of the race committee the day's events or race may be postponed or abandoned due to the threat or occurrence of severe weather. If a decision to start cannot be made within a sixty (60) minute postponement time the events / race should be abandoned for the day.

27.2 Abandoned events / races may be re-sailed on another scheduled race day, notice will be given and posted on the Fleet notice board and the GSC Website, prior to the commencement of the rescheduled event / race.

27.3 Upper wind limit for a Classes may be used to determine if boats shall race or continue to race.

27.4 If the wind strength is consistently 30 knots or greater in the racing area, the race maybe abandoned.

27.5 The Race Committee's decision on wind strength is final.

28 EQUIPMENT

28.1 Yachts shall carry her correct sail number unless she has otherwise notified the Fleet Race Committee

28.2 Boats must be maintained up to the required safety level throughout the sailing season.

28.3 A boat or equipment may be inspected at any time for compliance with the Class Rules and Sailing Instructions.

28.4 Etchells and sports are required to carry a VHF radio capable of receiving VHF channel 73 the race frequency

29 RUBBISH

- 29.1 Competitors shall not dispose of rubbish into the water. competitors infringing may be disqualified. Spinnaker banding is exempt from this instruction

30 RADIO COMMUNICATION

- 30.1 Except in an emergency, a boat shall neither make radio transmission while racing nor receive radio communication not available to all boats. This prohibition includes use of mobile phones.
- 30.2 The Race Committee may broadcast the course to be sailed, names / sail numbers of OCS boats, and / or other information of interest to competitors on VHF channel 73. Any failure of, or defect in, such a broadcast will not be grounds for redress. This changes RRS 60.1 and 62
- 30.3 Etchells and Sports Boats may sign on by radio on or notify retirement from the race on VHF channel 73

31 CHANGE OF VESSEL OWNERSHIP

- 31.1 In the event of vessels changing ownership within the Club, any trophies already finalised shall be awarded to the original owner and / or skipper. The new owner and / or skipper shall not be credited with any points already won by the vessel for trophies not finalised at the time of changing ownership, unless the Class Executive, with the endorsement of the Sailing Committee, recommends such transfer of points.

32 PRIZES

- 32.1 All Series Perpetual trophies and prizes will be awarded at the Fleet Presentation Nights.
- 32.2 The Sailing Committee may establish additional prizes as required during the year.

33 LASER FLEET AWARDS

- 33.1 Junior sailors shall be under 19 years of age at 31st December 2014.
- 33.2 Club Championship Series, scored on elapsed time.
One trophy for each of:
- Overall Standard Rig.
 - Overall Radial Rig. Overall
 - 4.7 Rig.
 - Junior Radial Rig.
 - Junior 4.7 Rig.
- 33.3 Trophies for the handicap results during Club Championship Series
One trophy for each of:
- Overall Standard Rig (Charlie Clark Trophy)
 - Radial and 4.7 Rig (John Rigg Trophy)
- 33.4 Pointscore Series, scored on handicap.
One trophy for each of;
- Overall fleet of Standard, Radial and 4.7 rigs. The
 - junior fleet of Standard, Radial and 4.7 rigs
- 33.5 Sprint Series scored on handicap.
One trophy overall fleet of Standard, Radial and 4.7 rigs (Ron Thompson Sprint Series Trophy)
- 33.6 Positions in the junior divisions on single handicap race days for Radial and 4.7 Rigs shall be taken from the finish position after 3 laps except when there is a handicap start when all sailors including juniors will sail 4 laps and have results based on the finish position after the 4 laps.

Positions for senior divisions and Standard Rig juniors will always be taken from the finish position after 4 laps. Junior sailors who complete the 4 lap course will be eligible for both senior and junior awards for the day.

For season pointscore and club championship series a junior will qualify in both overall and junior divisions with the junior ranking taken from the overall ranking.

If a Radial or 4.7 Rig junior sailor has both a 3 lap and 4 lap finish position on any day then the four lap result shall be used towards the season pointscore

33.7 Most improved sailor all fleets and divisions (Wally Cook Memorial Trophy).

33.8 Other awards will be made at the discretion of the Laser Class Executive including the most fastest times in overall and junior divisions counting both Pointscore and Club Championship Series.

34 LIABILITY / DISCLAIMER

34.1 Disclaimer: It is the responsibility of owners and skippers to ensure that each boat nominated on the entry form complies with the 'rules' as defined in the RRS.

34.2 All competitors who sign the entry form, in doing so, have made a declaration to the Organising Authority that the nominated boat will, at all times while racing, comply with the requirements of Australian Sailing, the Notice of Race and Sailing Instructions, including:

- a) RRS 46 and it is the responsibility of the person in charge of the boat to ensure that the crew complies with RRS 56;
- b) The Australian Sailing Special Regulations;
- c) Adequate current Third Party Property Liability Insurance and Third Party Personal Liability cover of not less than \$10,000,000 (Ten million dollars) for any one incident. All insurance shall be maintained during the period of racing;
- d) The organising Authority is not responsible for the seaworthiness of a boat whose entry is accepted or the sufficiency or adequacy of its equipment;
- e) The person who signs and lodges the entry form with the Organising Authority, warranting to the Organising Authority that he or she will draw to the attention of any person who competes on the yacht, the subject of the entry form in any event conducted by the Organising Authority of the risk warning below;
- f) The person who signs and lodges this entry form with the Organising Authority, acknowledging receipt of the risk warning below and releasing the Organising Authority from any claim or liability whatsoever for any harm or personal injury suffered by him, or by any person claiming through him, in any event conducted by the Organising Authority.
- g) All those taking part in these races do so at their own risk and responsibility. Specific attention is drawn to RRS 4 which states; "The responsibility for a boat's decision to participate in a race or to continue racing is hers alone". The Gosford Sailing, Class Associations, Race Committee and other race officials are not responsible for any damage or injury either afloat or ashore prior to, during or after the event.

34.3 Risk Warning:

Participants are warned that, regardless of the precautions, which might be taken by reasonable and experienced persons, sailing can be a dangerous pursuit and participants are exposed to significant risk of property damage, physical harm and possibly death. As an indication, these risks may include, but are not limited to:

- The extremes of weather and sea conditions.
- The potential that control of vessels may be lost, resulting in collision with objects and other vessels.
- The sudden movement of the vessel at any time and the possibility that participants may fall or be thrown overboard, resulting in drowning.
- The possibility that participants may be injured by equipment on the vessel.
- The absence of immediate medical care and the likelihood that significant delays may occur before medical care is available.
- Exposure to the elements for extended periods.

Gosford Sailing Club, Class Associations and NSW Roads and Maritime Services also warn participants that regardless of their best intentions, they may be unable to render assistance to participants who are in distress. Participants are warned to consider the above risks and all other risks before deciding to participate in any sailing event with Gosford Sailing Club. Participants are also advised that although Gosford Sailing Club is covered by third party liability insurance, this cover DOES NOT extend to participants. Any participant who considers they have a need for insurance must make their own private arrangements with an insurer. Membership of a sailing club affiliated with Yachting NSW entitles you to personal accident insurance cover.

35 INSURANCE

- 35.1 Each participating yacht shall be insured with valid Third Party Liability Insurance of not less than AU\$10,000,000 for any one event. Such insurance shall cover all risks arising from participation in the racing program whether ashore or afloat.
- 35.2 Each entrant shall sign the insurance compliance form. Proof of current insurance may be requested by the race committee at any time

36 RIGHTS TO USE NAME AND LIKENESS

- 36.1 In participating in this Event, a competitor automatically grants to the Organising Authority and the sponsors of this Event, the right in perpetuity to make, use and show, from time to time and at their discretion, any motion pictures, still pictures and live, taped or film television and other reproductions of him/her during the period of the competition for the Event in which the competitor participates and in all material related to the said Event without compensation

ATTACHMENT 1

2016 / 17 COURSES

The diagram below shows the approximate course configuration.

Etchells Courses

Course 1: Single Race Day

Course C: Single Race Day Start-1-2-1-2-1- Finish

Start-1-2-1-2-1-2-Finish

**Course: Two Race Day
Start-1-2-1-2-Finish**

Course C: Two Race Day Start-1-2-1-2-Finish

**“C” Courses are Down wind Finishes Signaled from the
Committee boat prior to the start by Code Flag C**

*Approx Wind
Direction*

Mark 1P

Finish Line

Start Line

Mark 2P

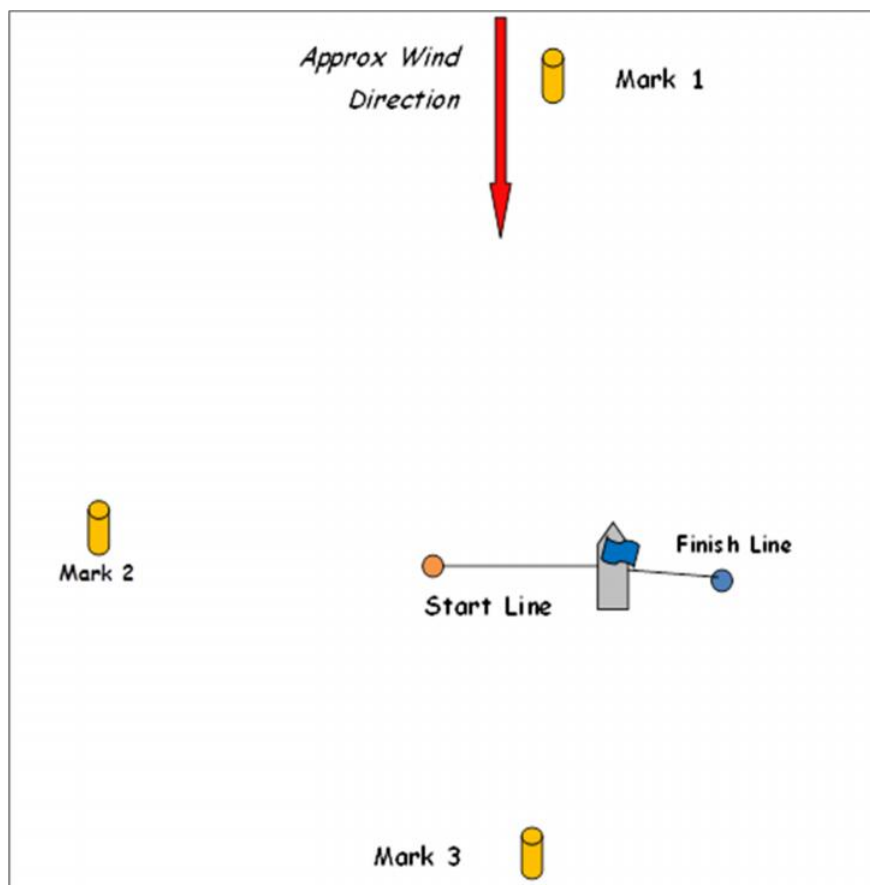
NOTES:

ATTACHMENT 2

2016 / 17 COURSES for **Mixed Fleet including Fireball and NS14**
Classes

The table below describes the order in which marks are to be passed

The diagram below shows the approximate course configuration (Port Course Shown)

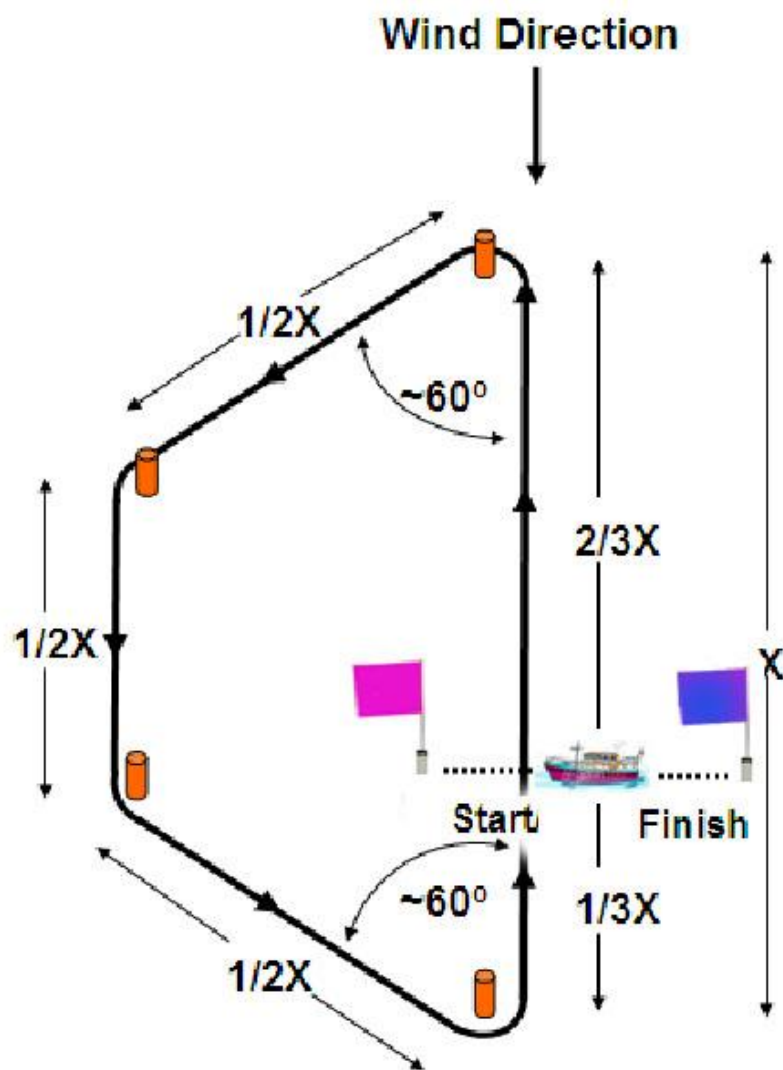


NOTES:

ATTACHMENT 3

2016 / 17 LASER FLEET COURSES

The diagram below shows the approximate course configuration

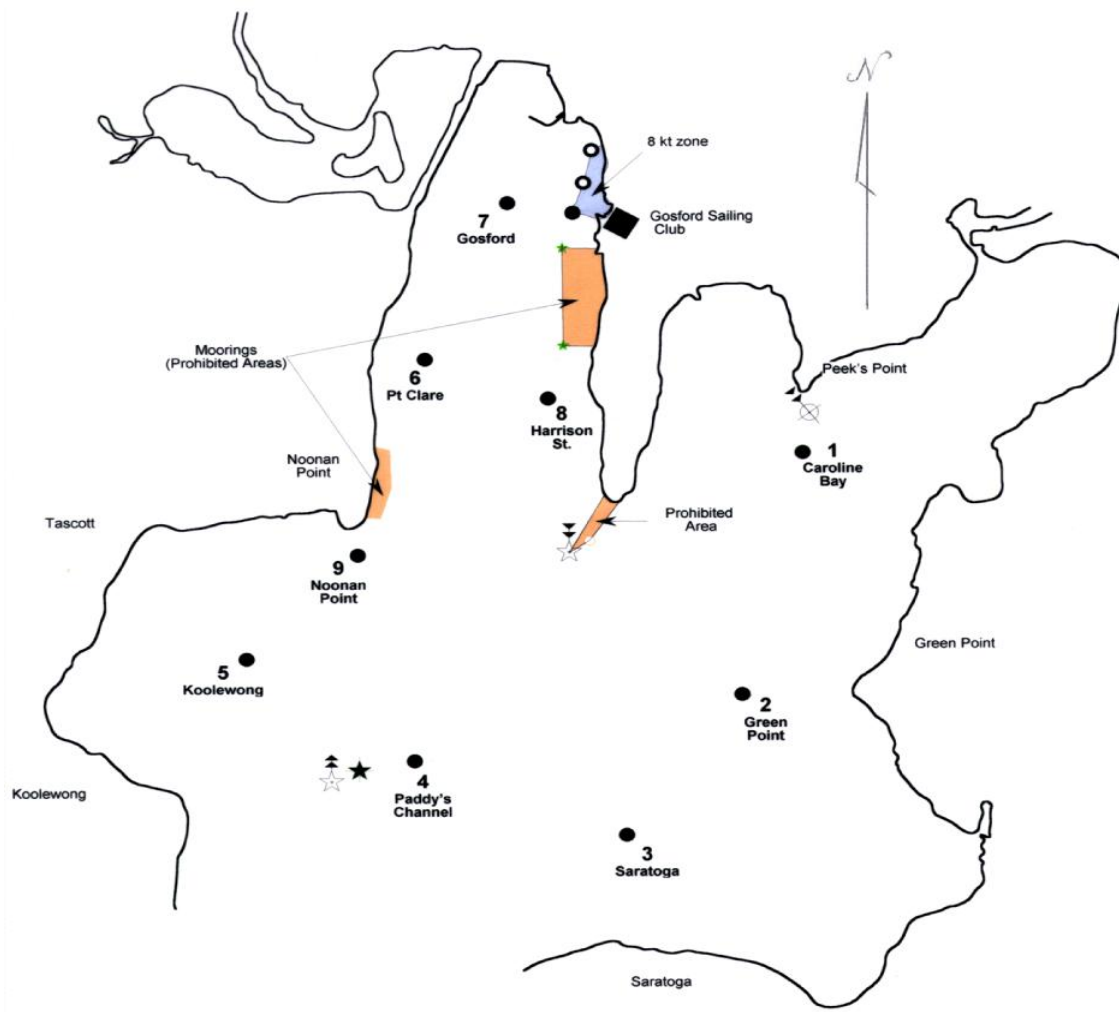


NOTES

ATTACHMENT 5

Permanent Fixed Marks

Approximate
Locations



Course No.	Windward Mark	Leeward Mark	Marks To
1 NE	1	5	Starboard
2 SE	3	6	Starboard
3 SW	5	1	Port
4 NW	6	3	Port
5 N	7	4	Port
6 E	2	5	Port
7 S	4	7	Port
8 W	5	2	Port

Mark No.	South	East	Mark No.	South	East
1	33.26.890	151.21.073	5	33.27.587	151.19.445
2	33.27.564	151.20.896	6	33.26.560	151.19.919
3	33.27.949	151.20.483	7	33.26.160	151.20.193
4	33.27.781	151.19.908	8	33.26.727	151.20.331
			9	33.27.175	151.19.751

ATTACHMENT 4 2016 / 17 COURSES

The diagram below shows the approximate course configuration.

16' Skiffs and Sports Boats

Course: Start-1-2-1-2-Finish

Mark 1p

**Approx
Wind
direction**

Start line

Finish line

Mark2p

